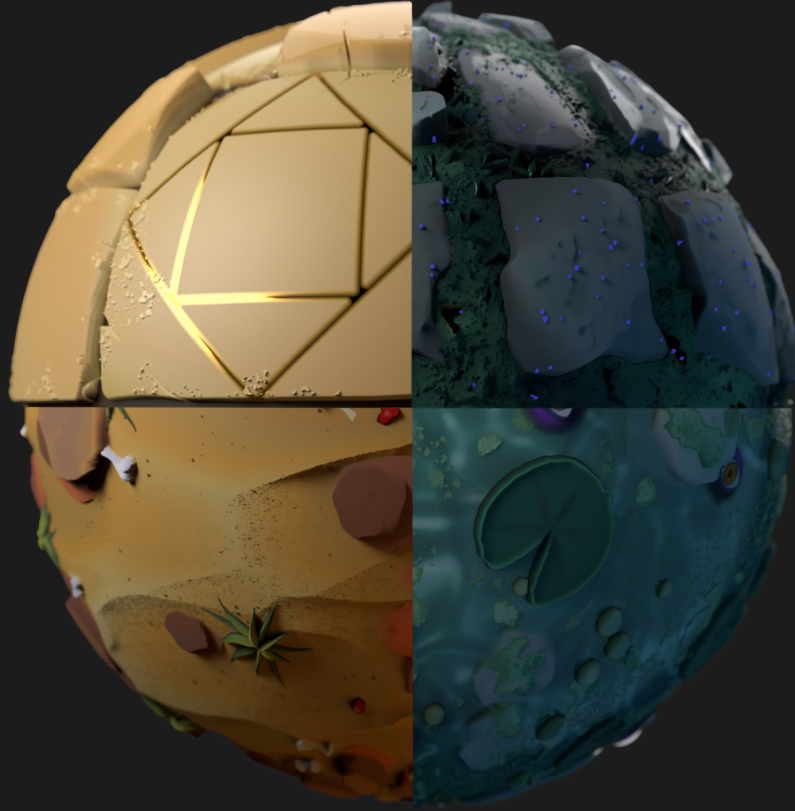


# MAGIC MATERIALS

DESIGNING PROCEDURAL  
AND DYNAMIC  
MATERIALS FOR GAMES

# CONTENTS

3	PROJECT DESCRIPTION
4	IDEAS & SKETCHES
10	TILES MATERIAL
26	NATURE MATERIAL
42	MAGIC MATERIAL
44	INTERIOR CHANGE CONCEPT
46	IMPLEMENTATION IN GAME ENGINE
52	PROJECT INFO

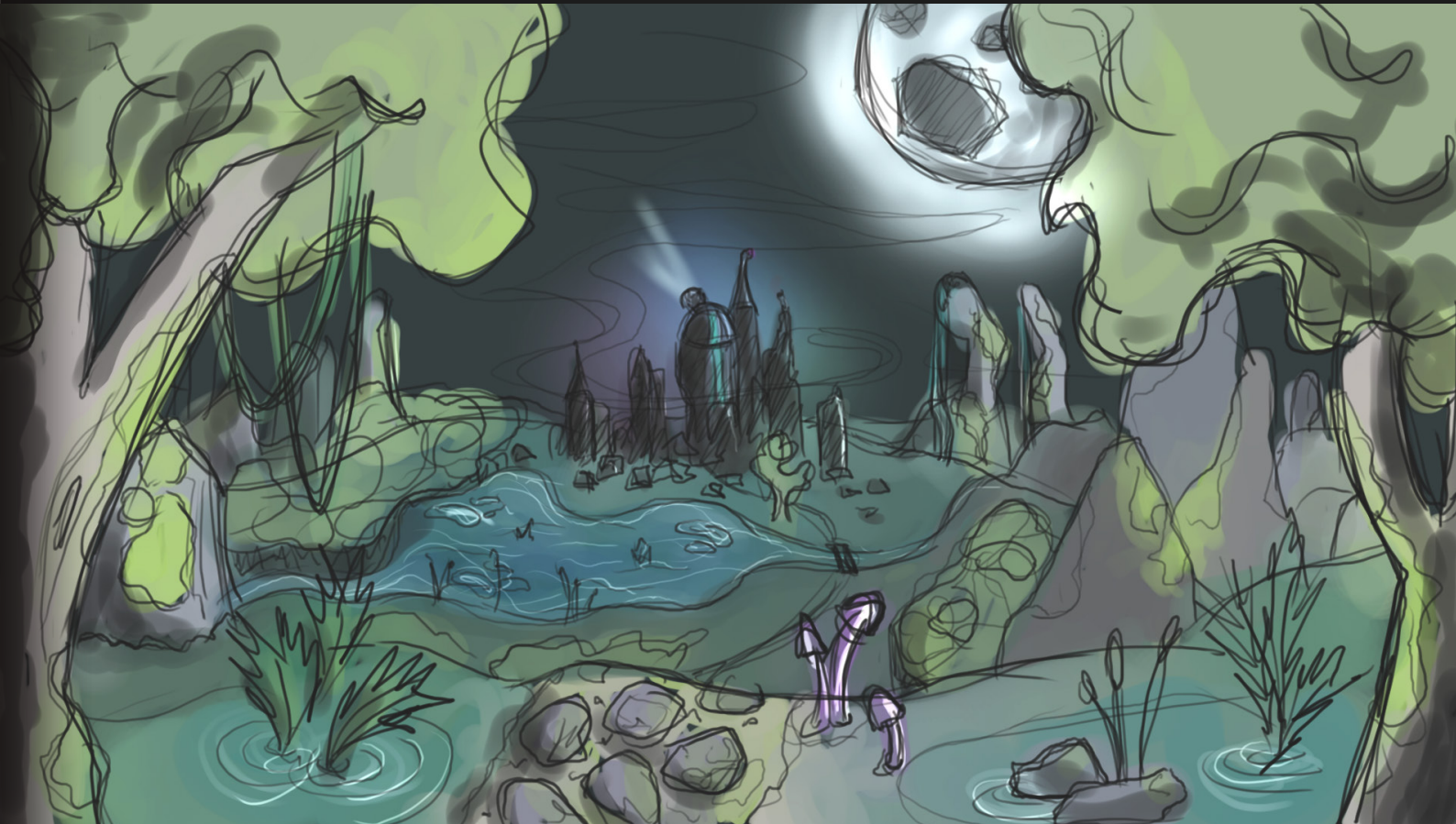
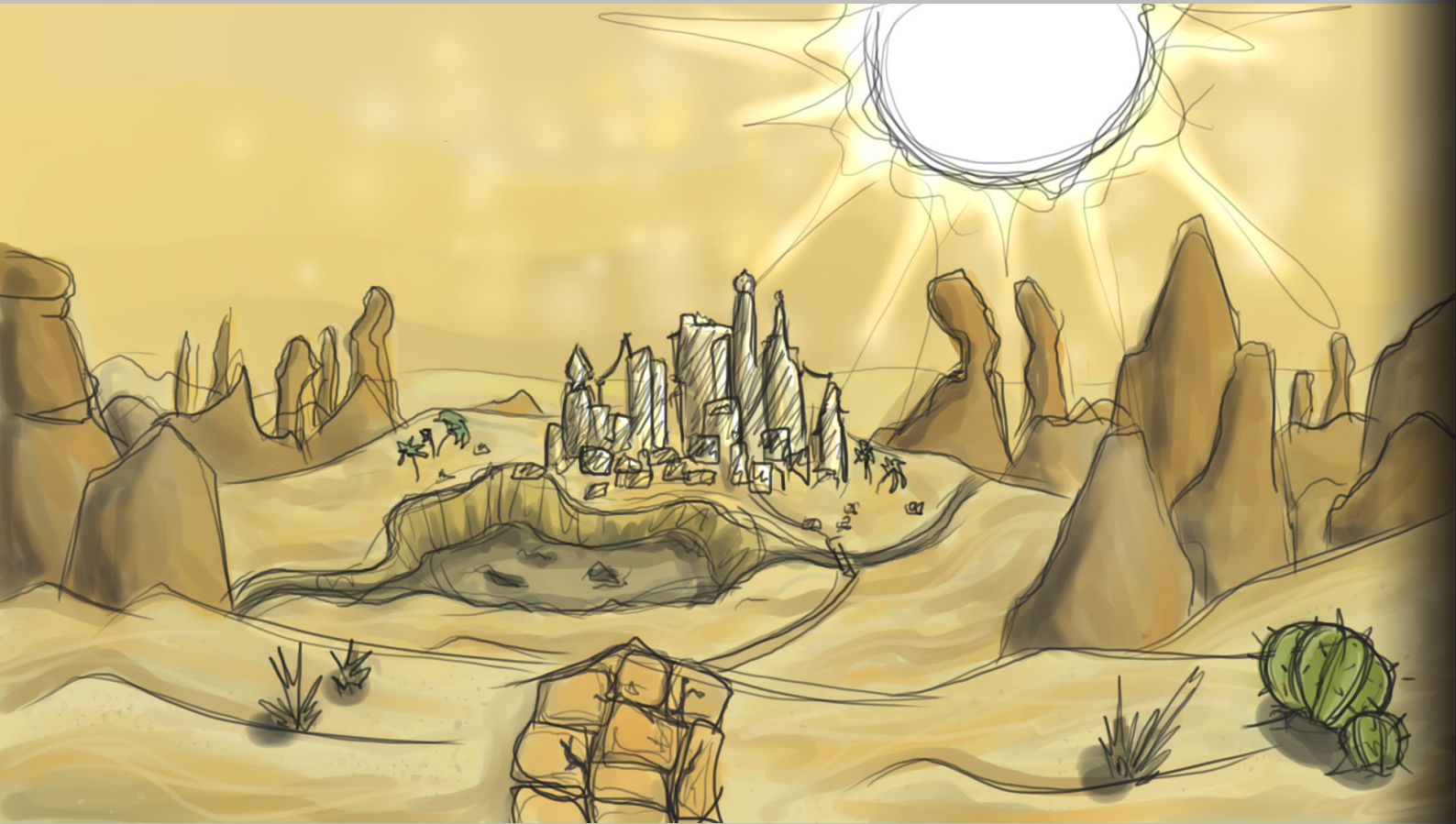


## PROJECT DESCRIPTION

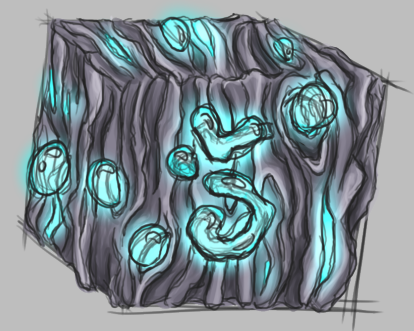
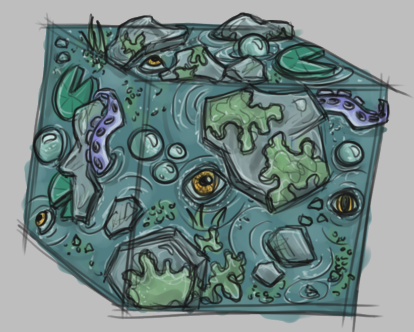
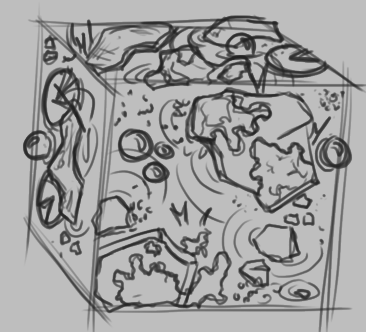
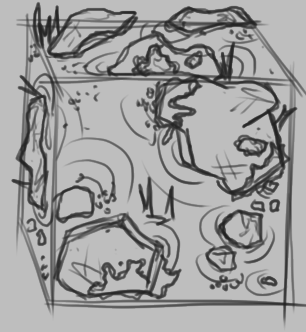
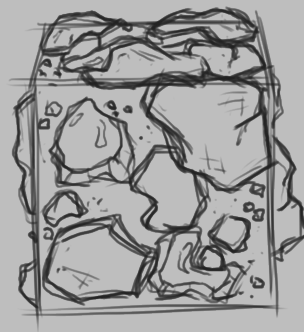
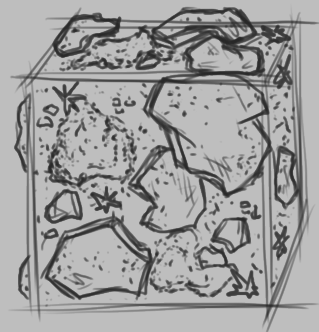
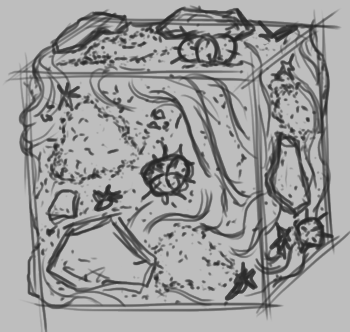
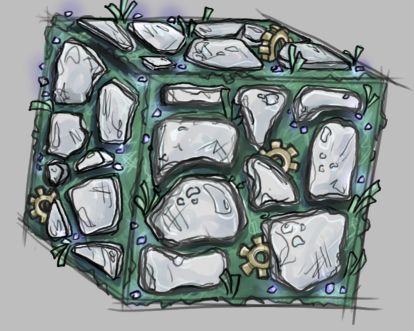
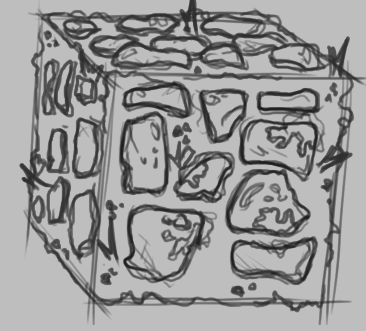
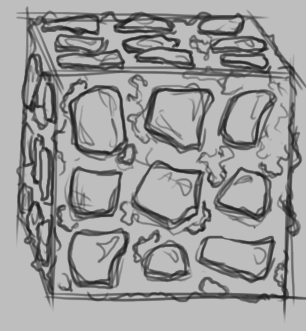
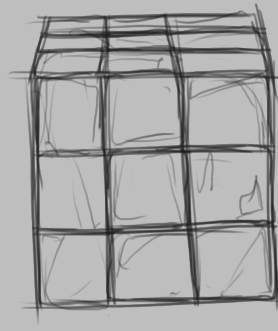
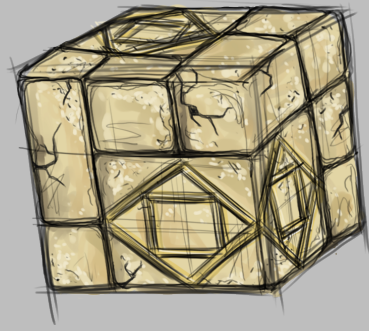
DIVE INTO THE WORLD OF „MAGIC MATERIALS“. THIS ARTBOOK CONTAINS THE CONCEPTUALISATION AND CREATION OF PROCEDURAL MATERIALS IN SUBSTANCE DESIGNER AND THEIR IMPLEMENTATION IN UNREAL ENGINE. LEARN MORE ABOUT THE BACKGROUND AND DESIGN DEVELOPMENT OF THE DIFFERENT TEXTURES AND THEIR USAGE AS DYNAMICALLY CHANGING MATERIALS THAT CAN BE INTEGRATED INTO A GAME ENGINE AS PUZZLE MECHANICS.



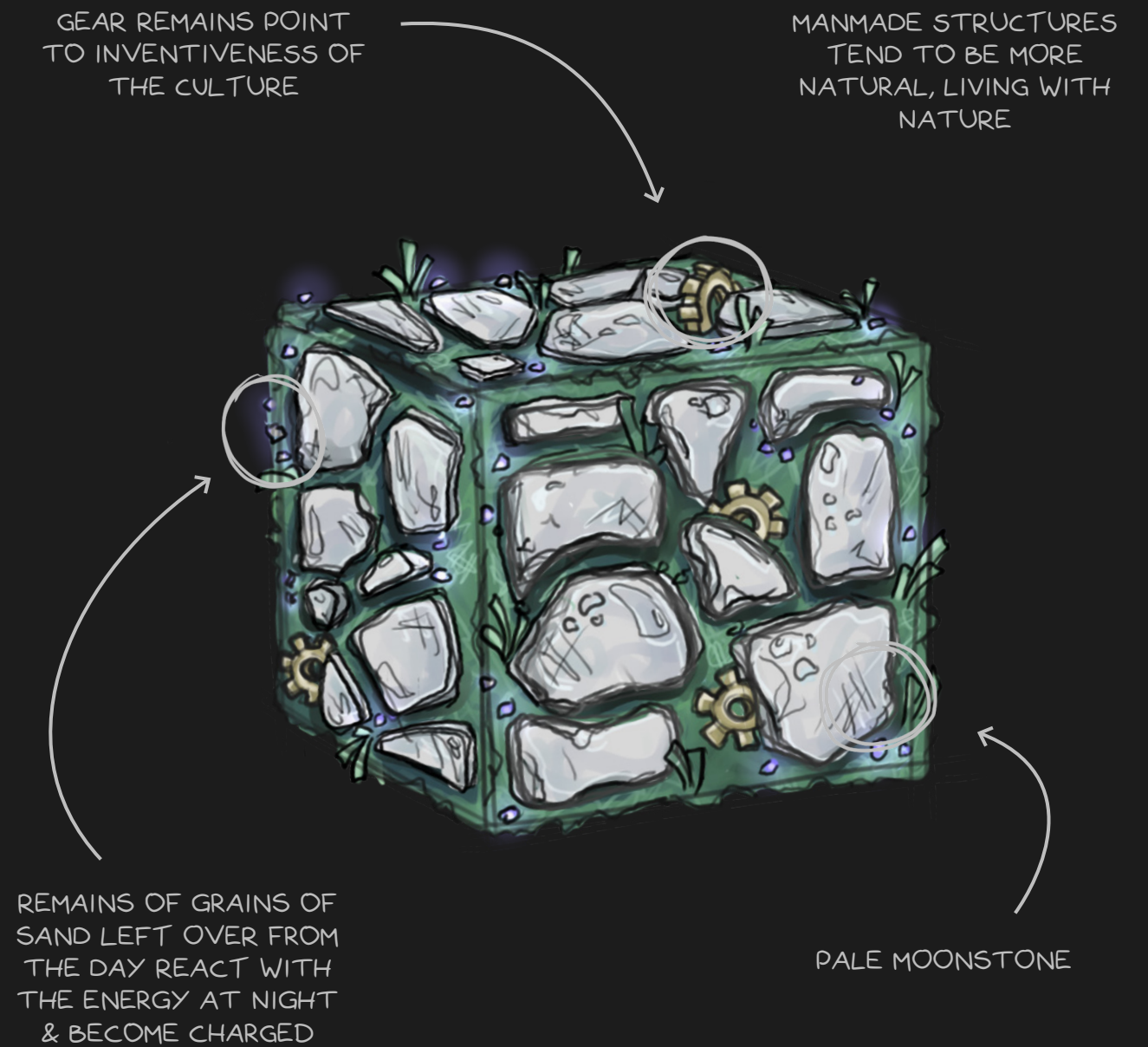
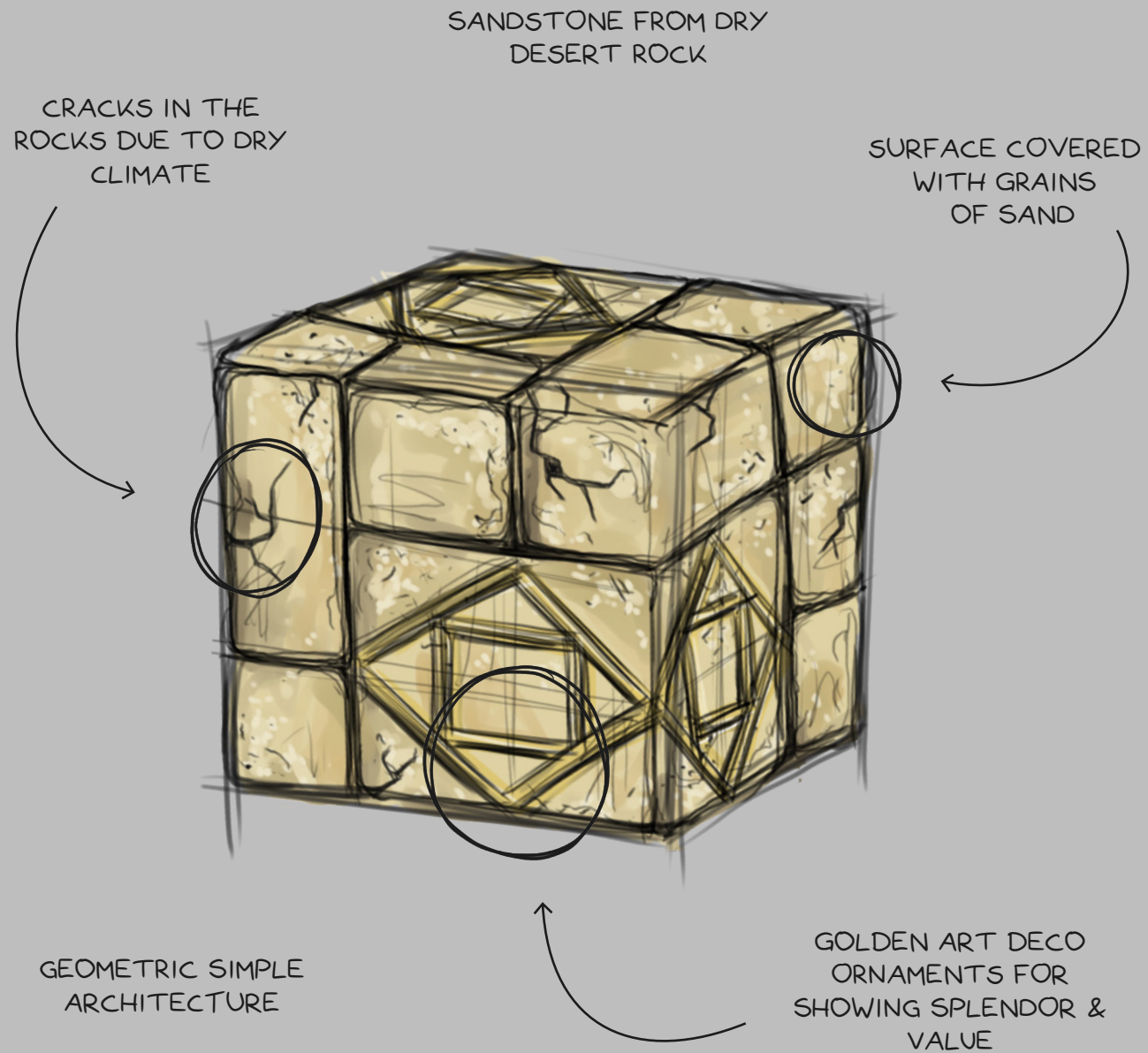




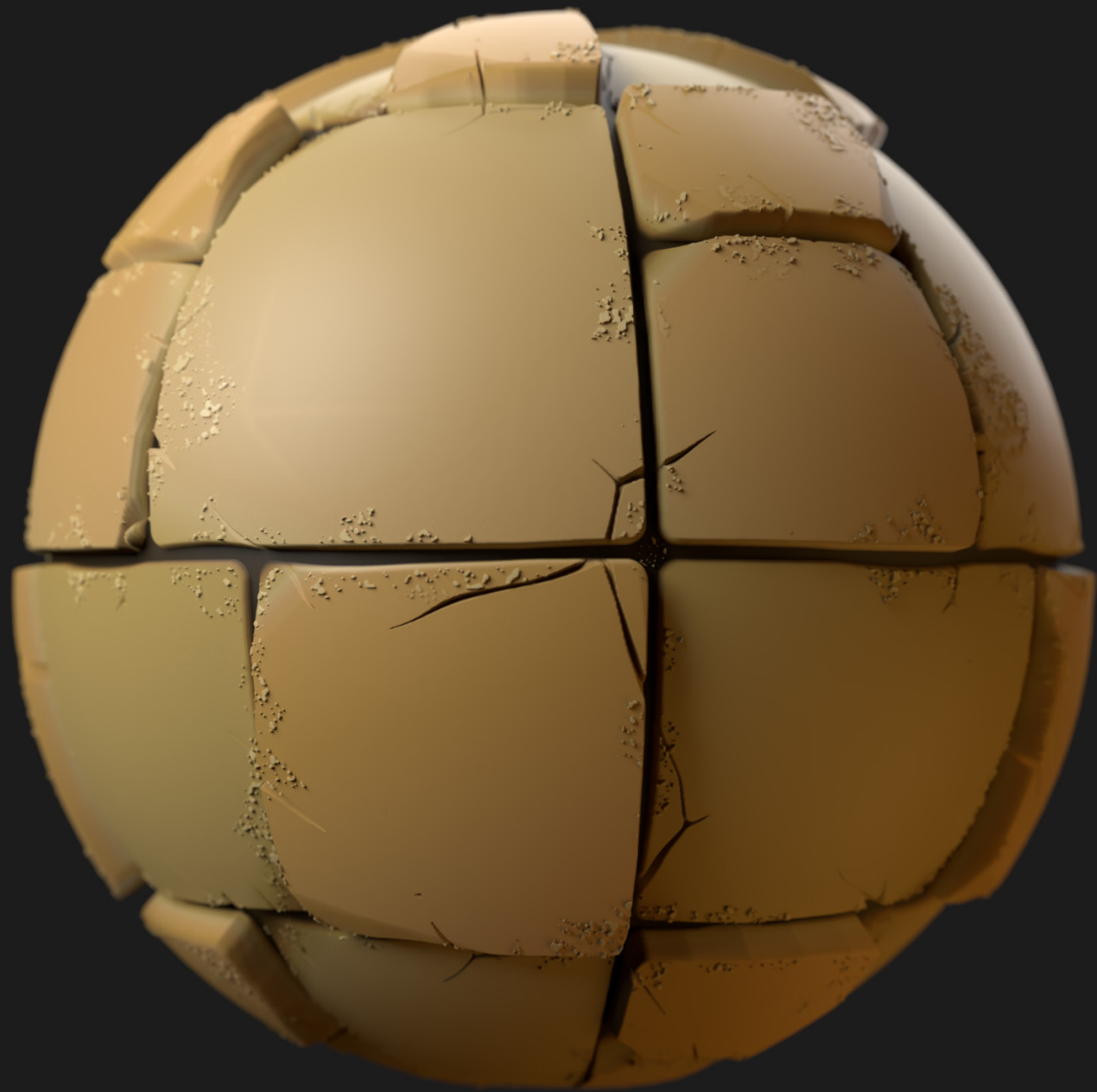
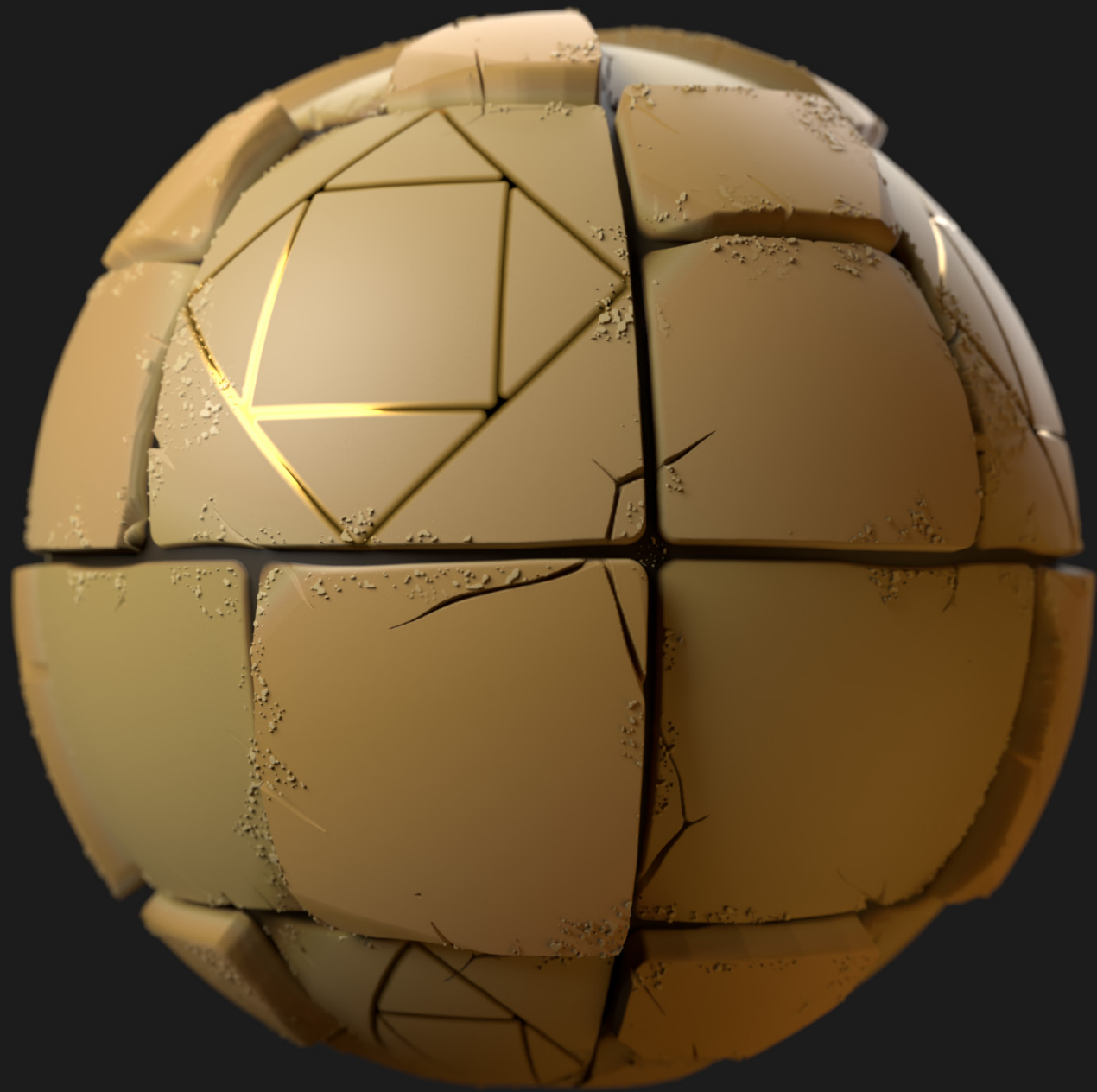




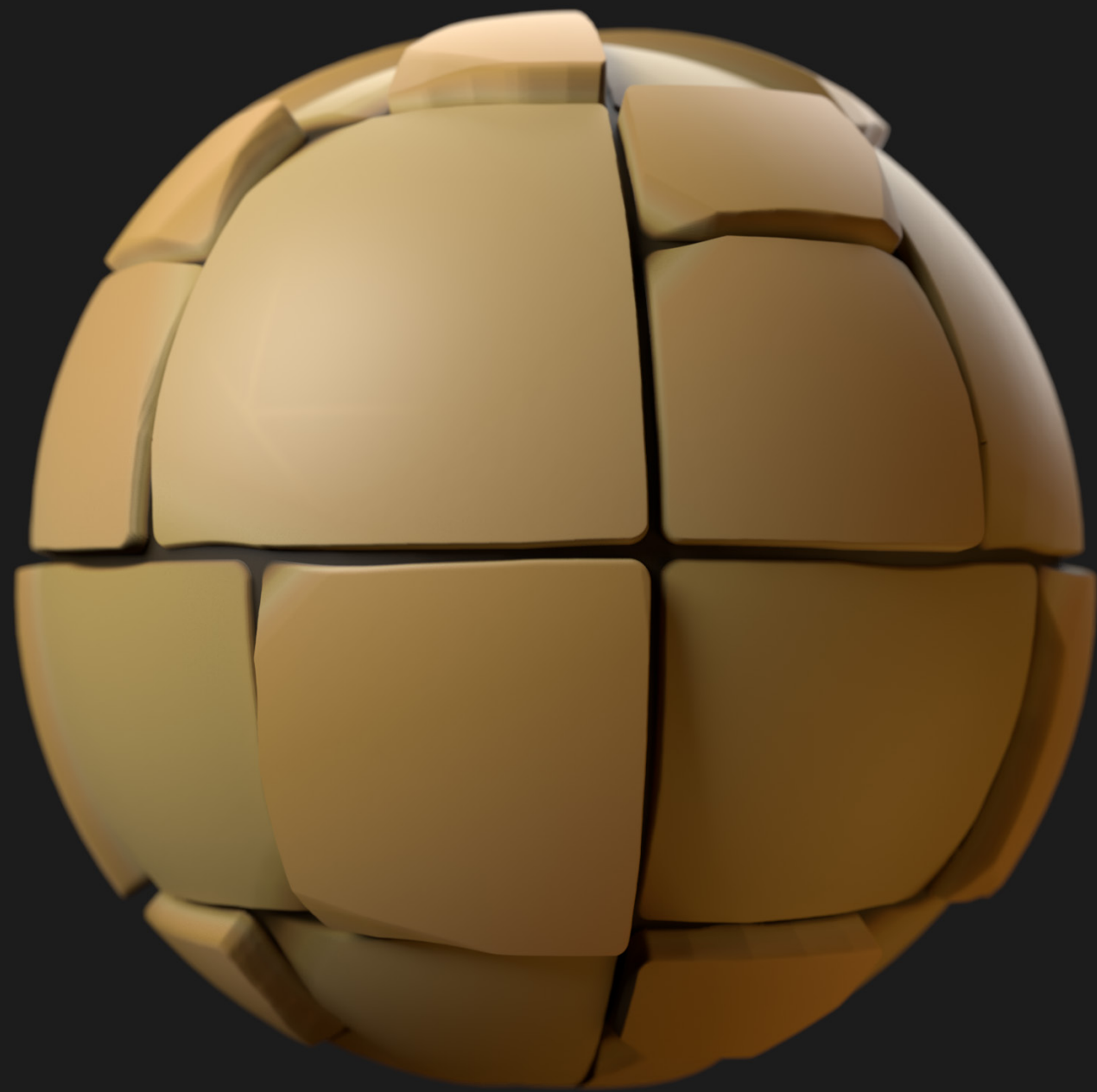
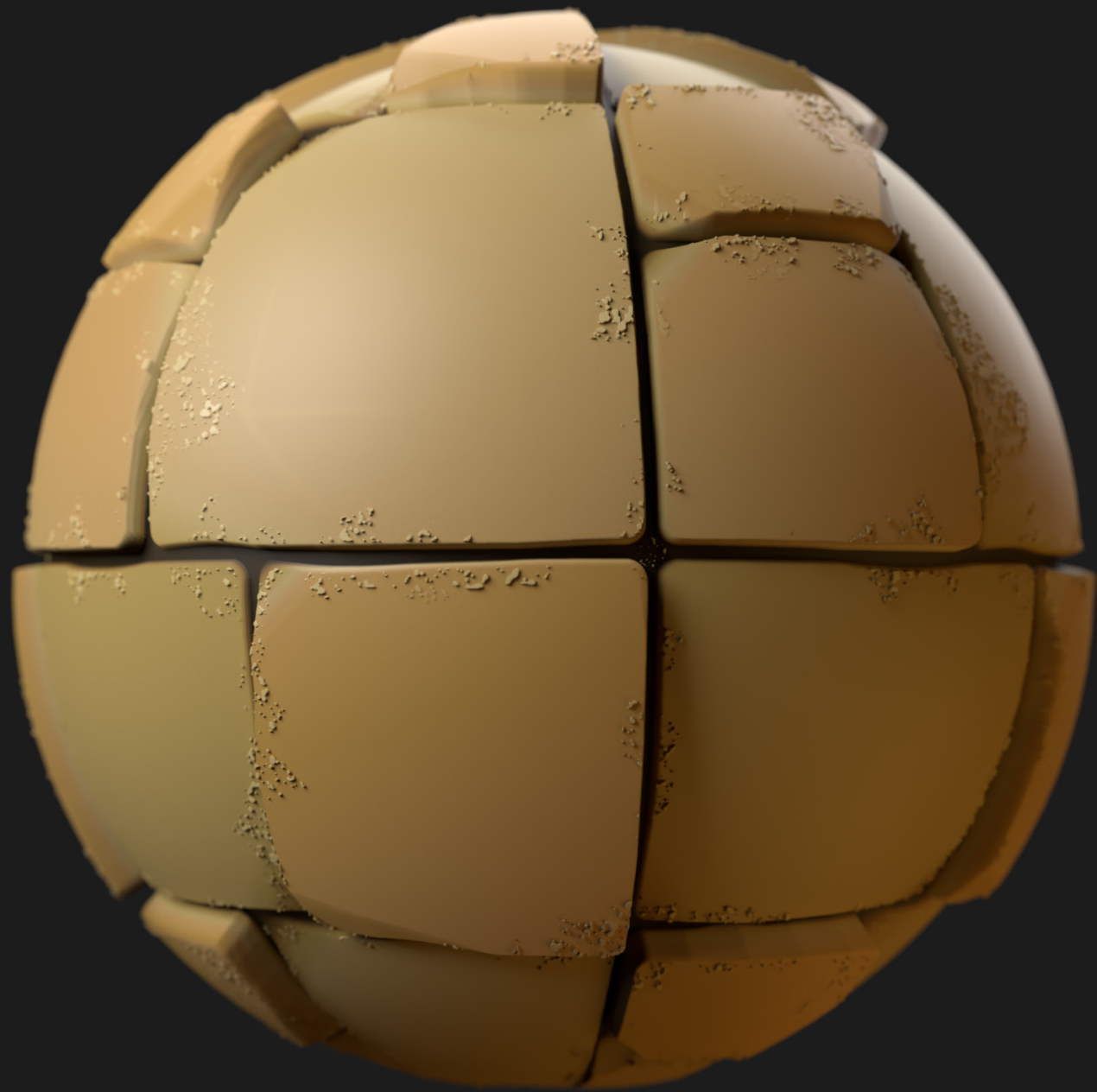


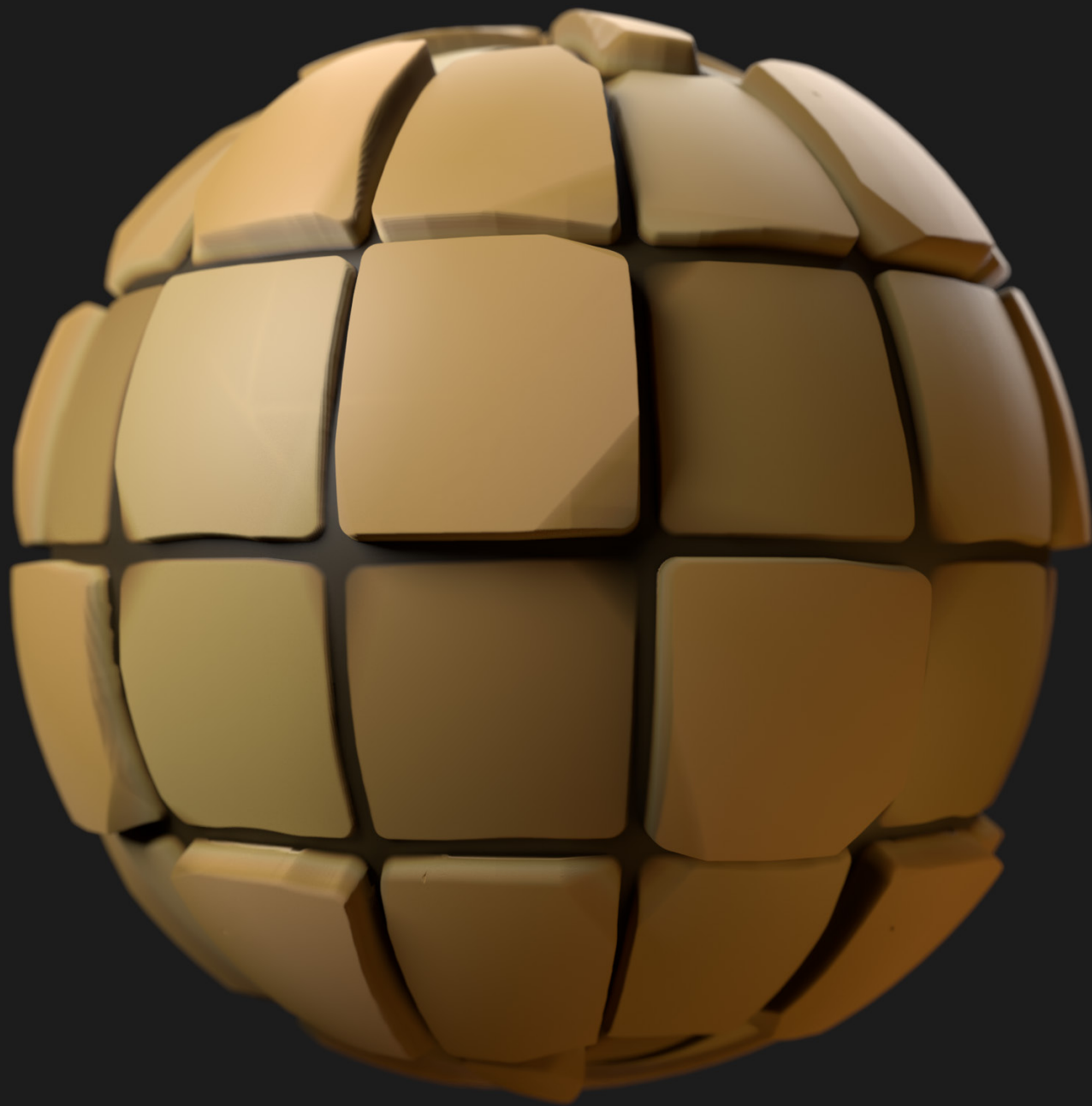






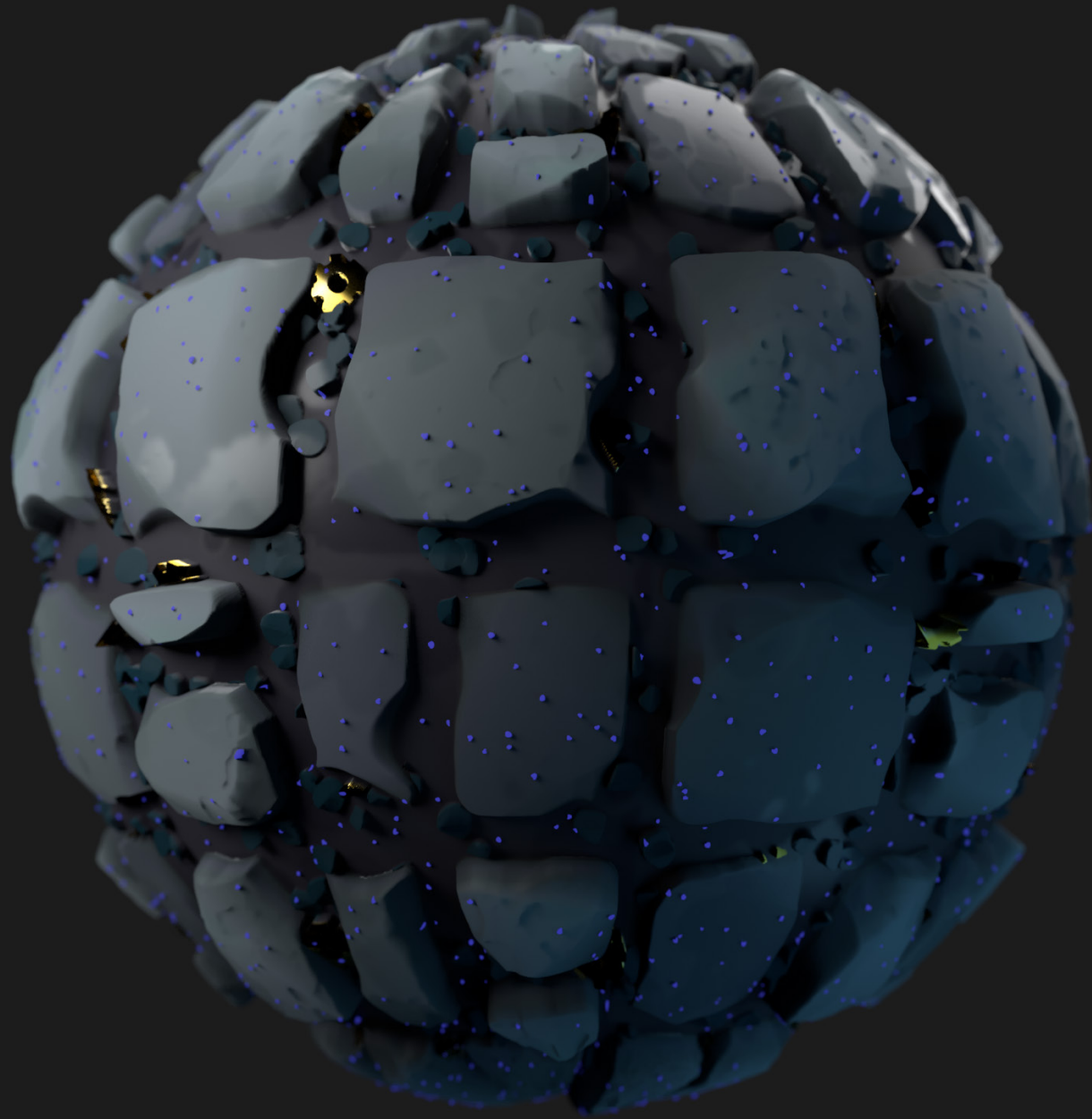
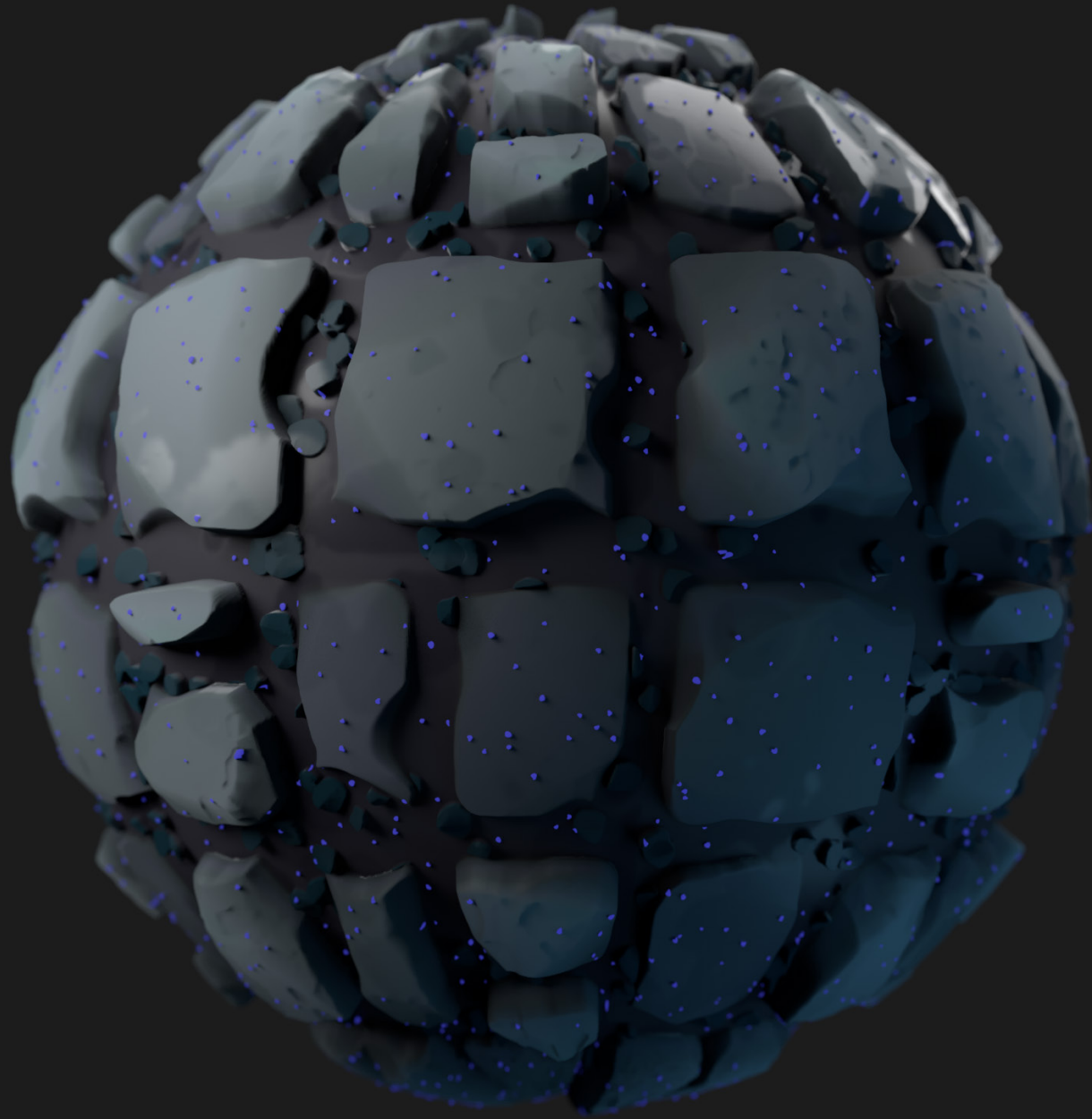


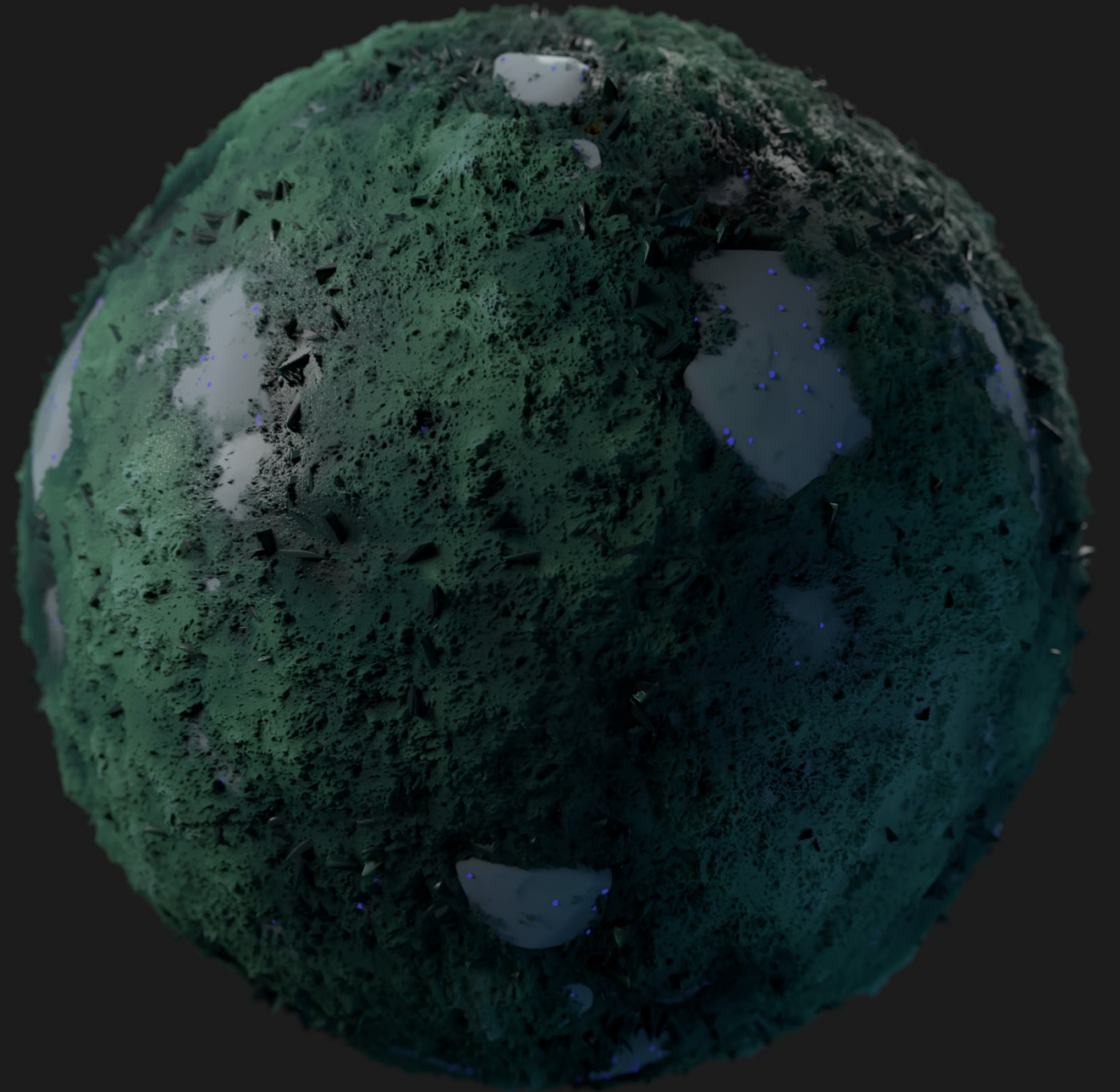
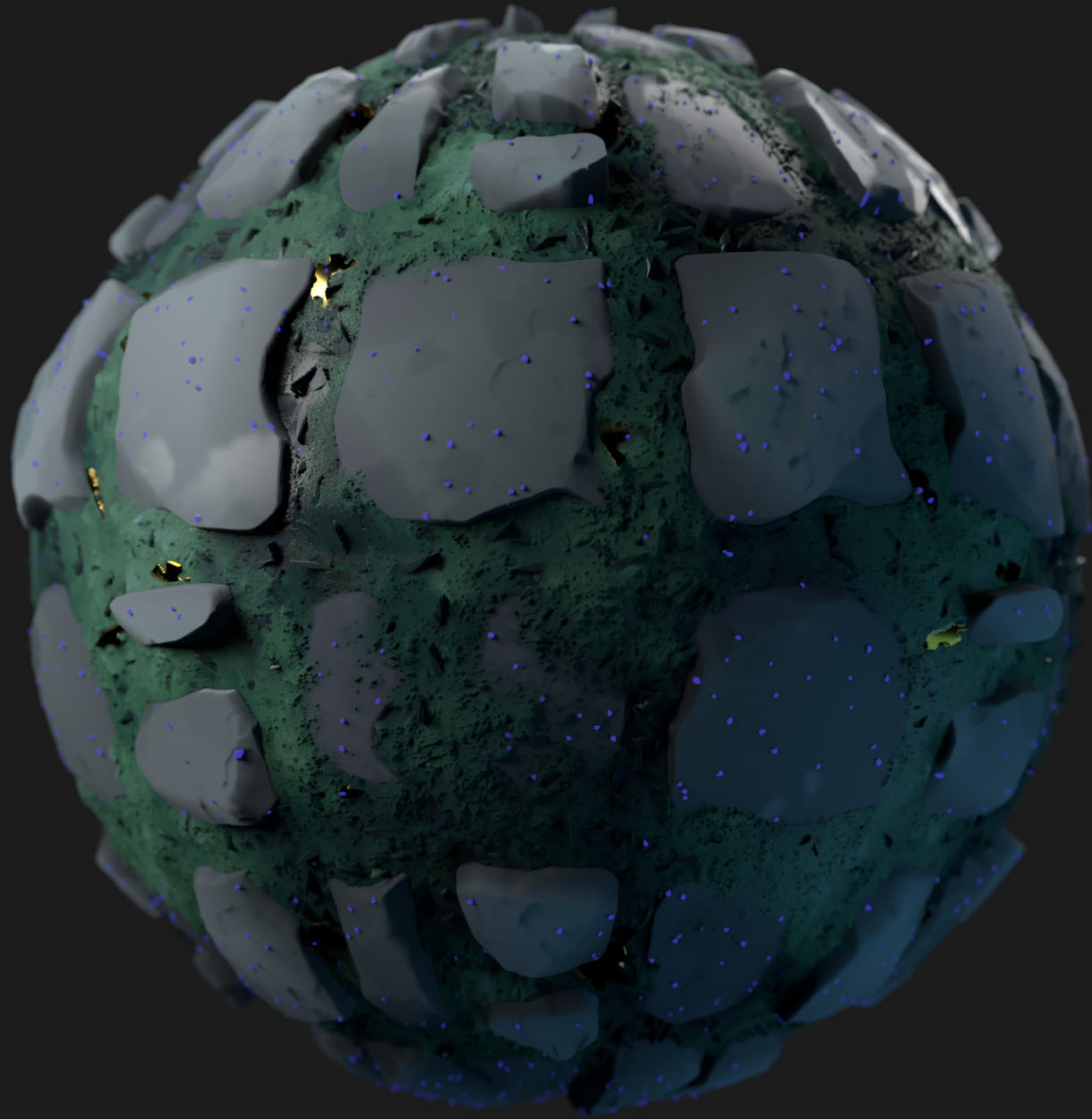














SAND IS GENERATED IN PLANET CORE & PUSHED ONTO THE SURFACE

DRY GRASSES & SPARSE DESERT PLANTS

ANIMAL CADAVER FROM SWAMP



DRY SAND- AND STONE DESERT

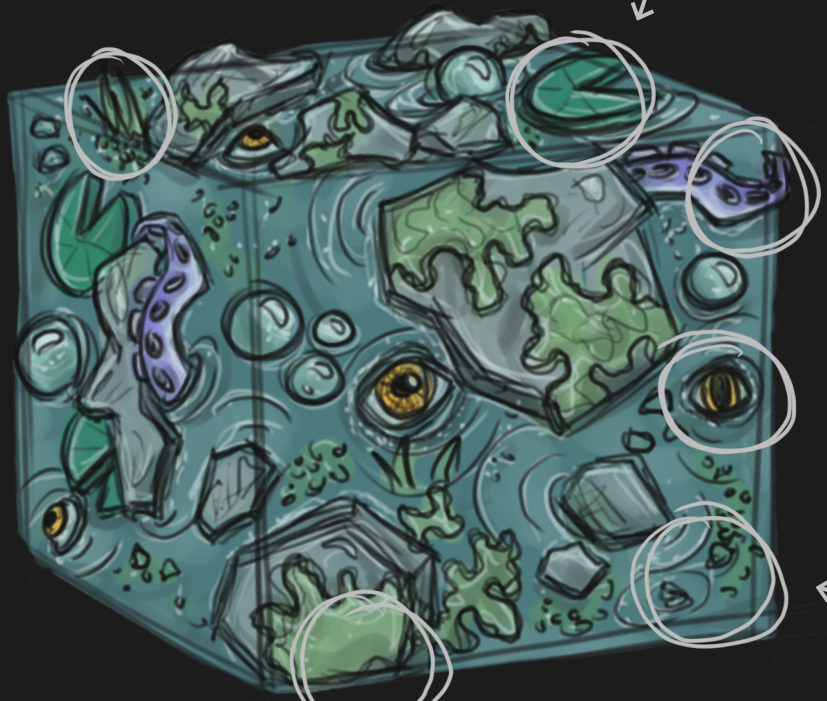
NATURALLY CUT GEMSTONES & GLASSES THANKS TO FAST ENVIRONMENT CHANGE

LILY PADS ON WATER SURFACE

INCREASED PLANT GROWTH DUE TO HIGH HUMIDITY

WEIRD CREATURES IN THE DEPTHS OF THE SWAMP WATER

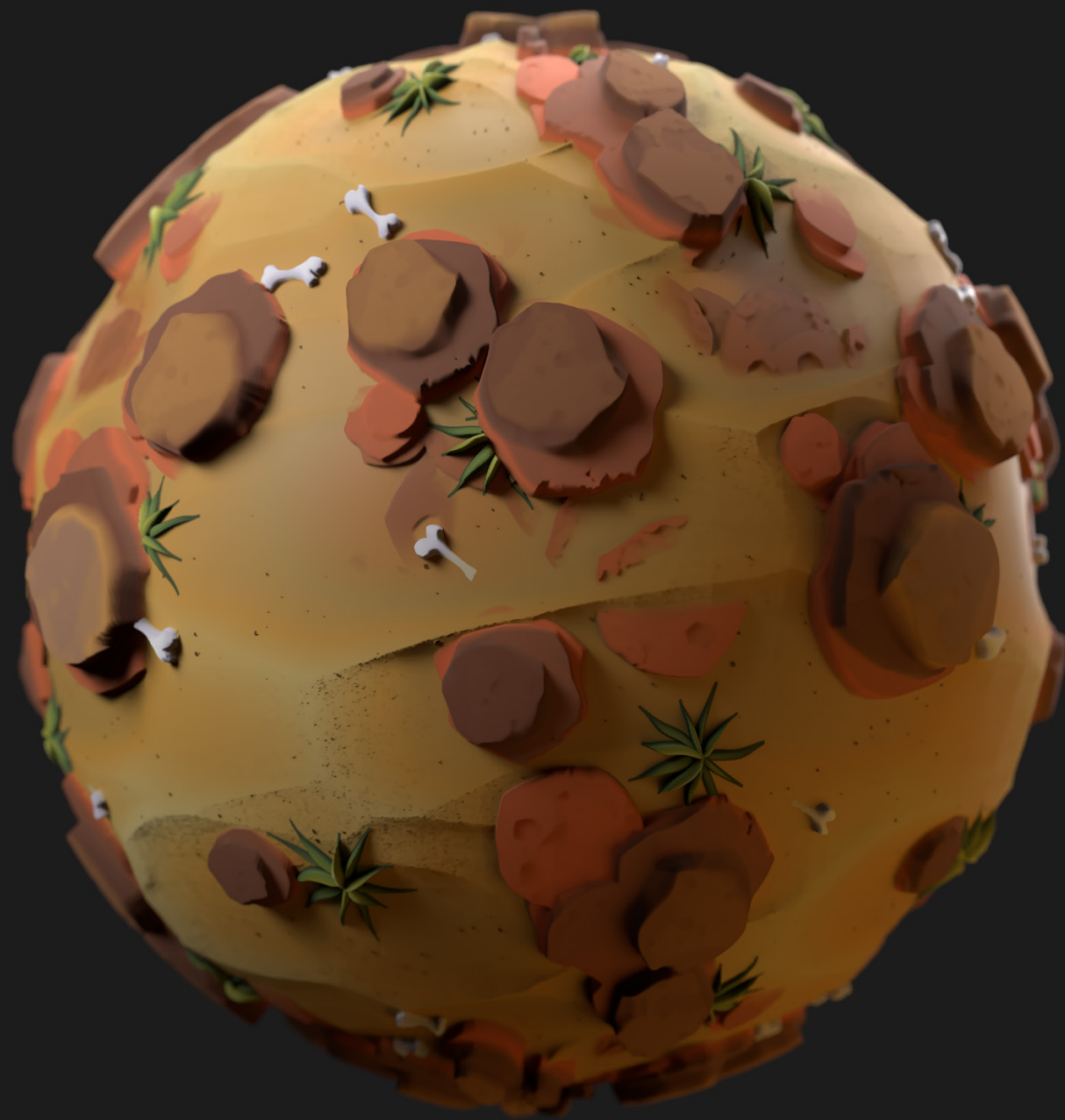
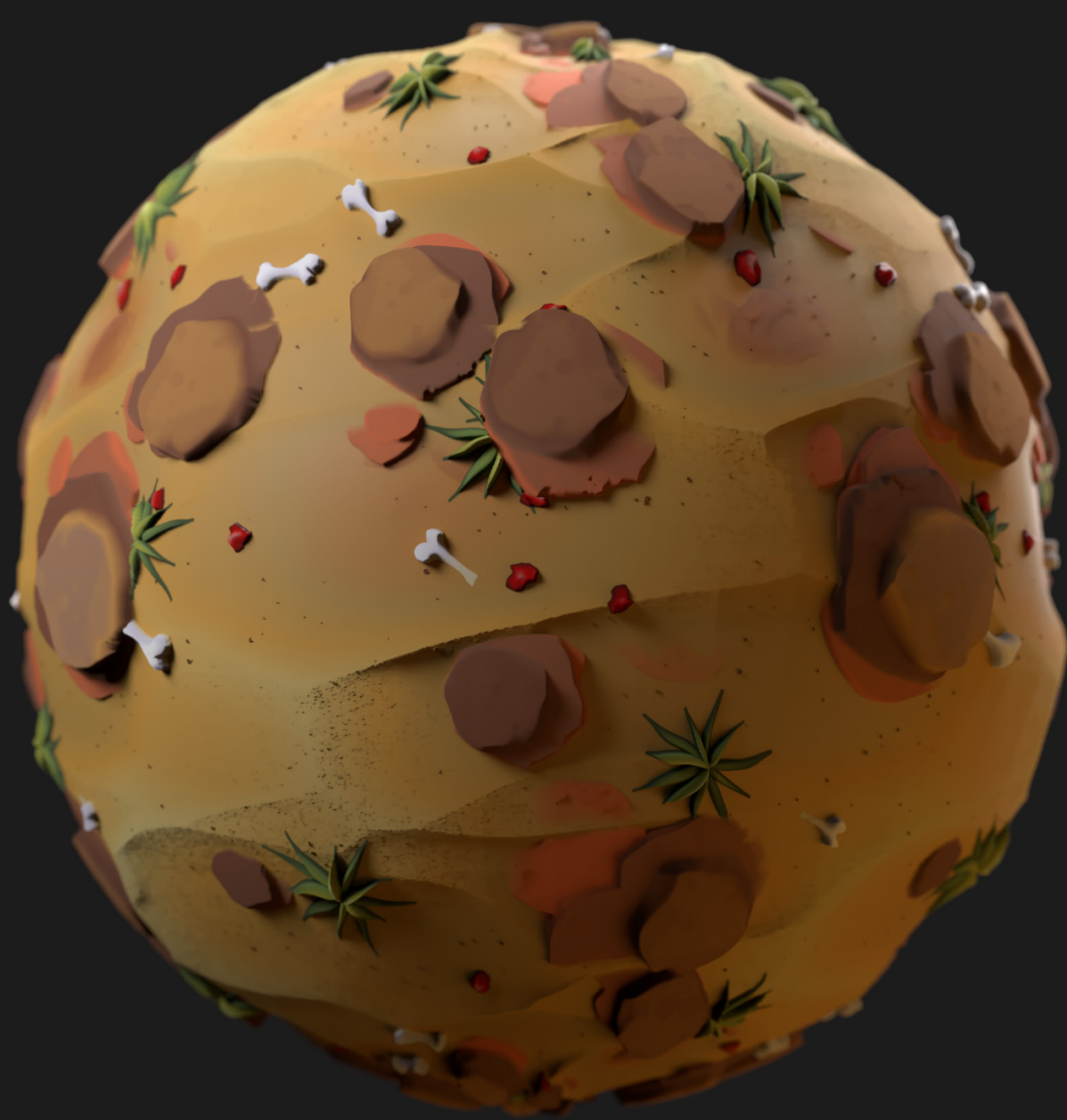
WET SWAMP



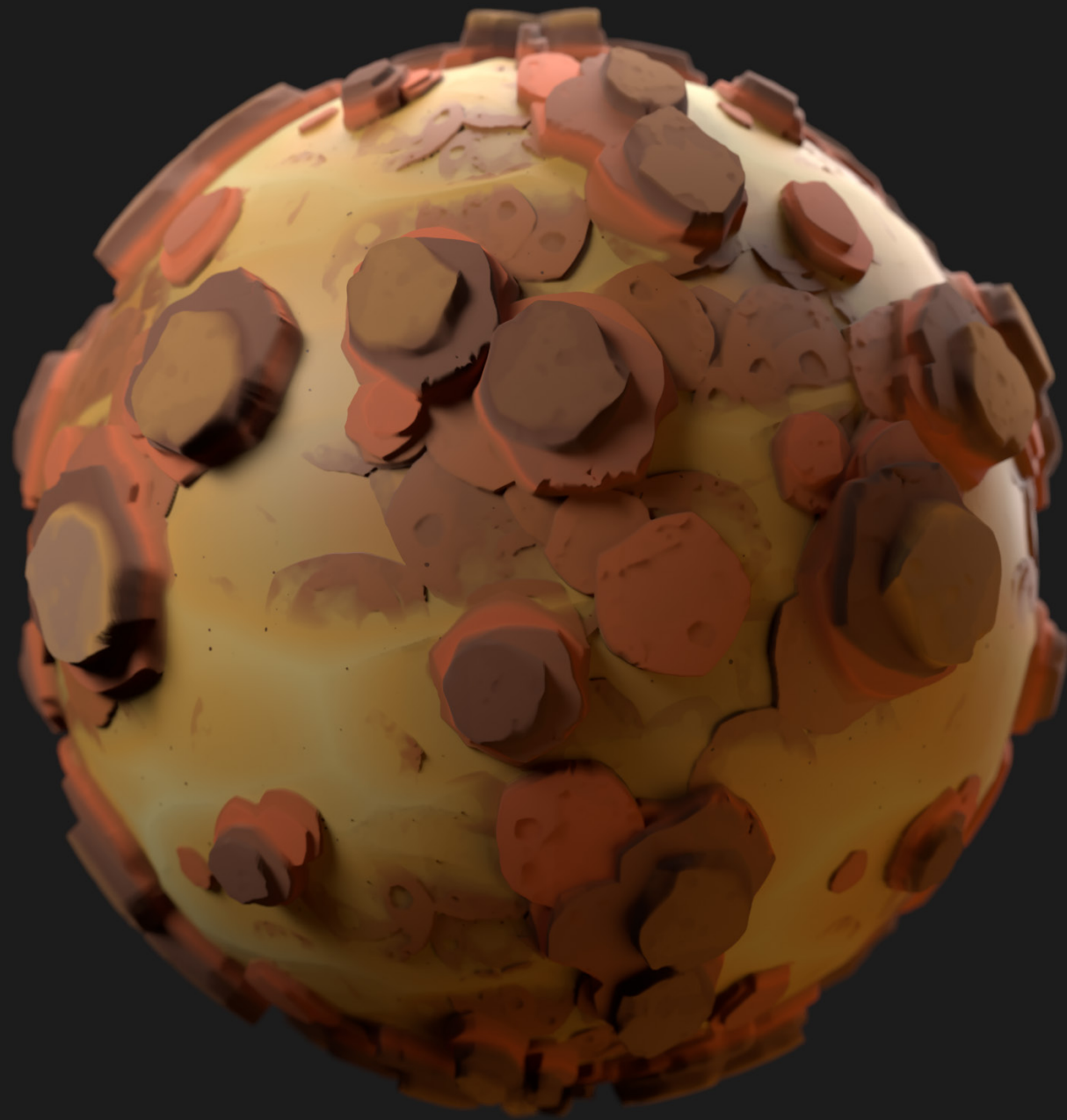
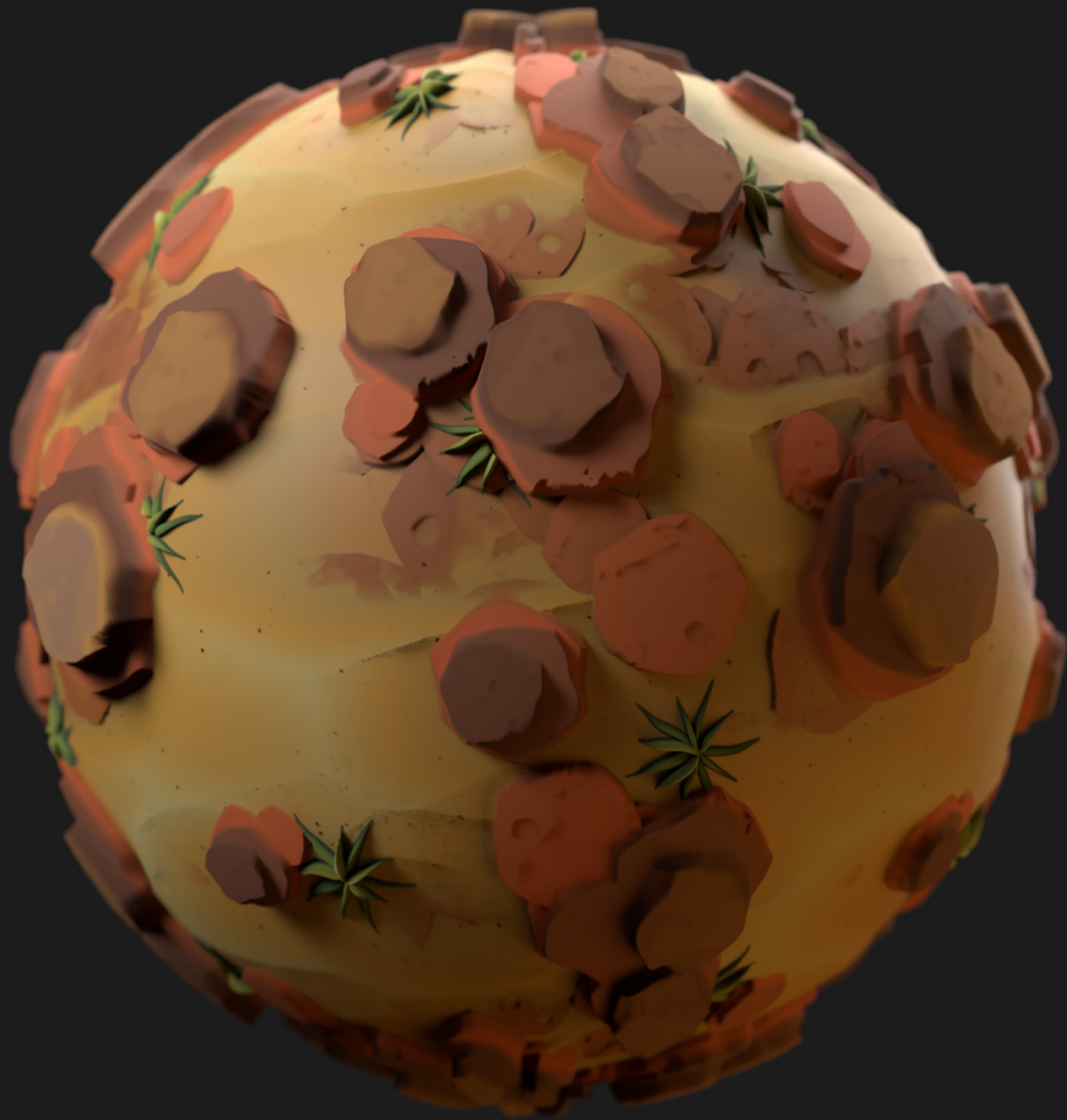
STONES OVERGROWN WITH MOSS

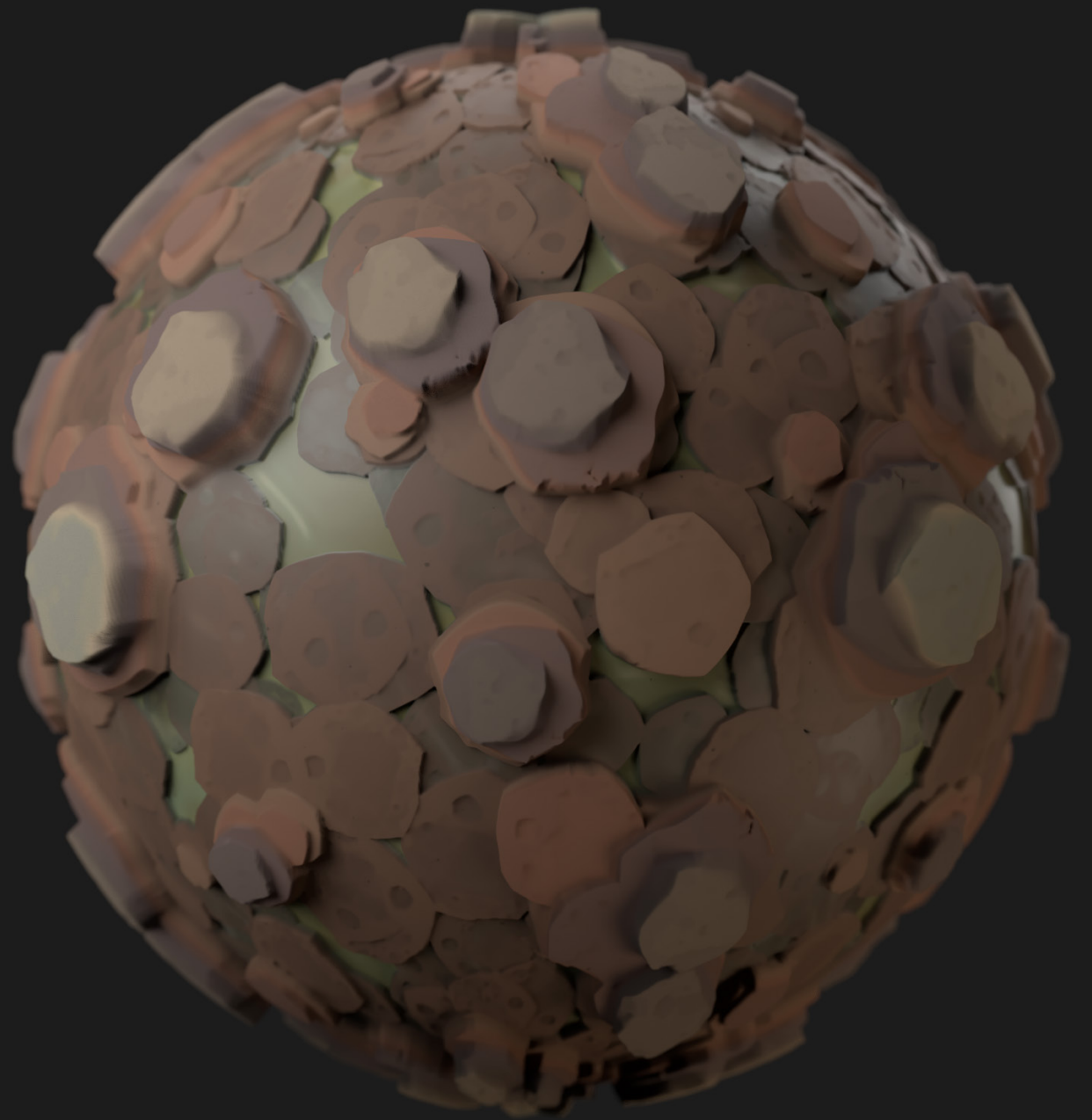
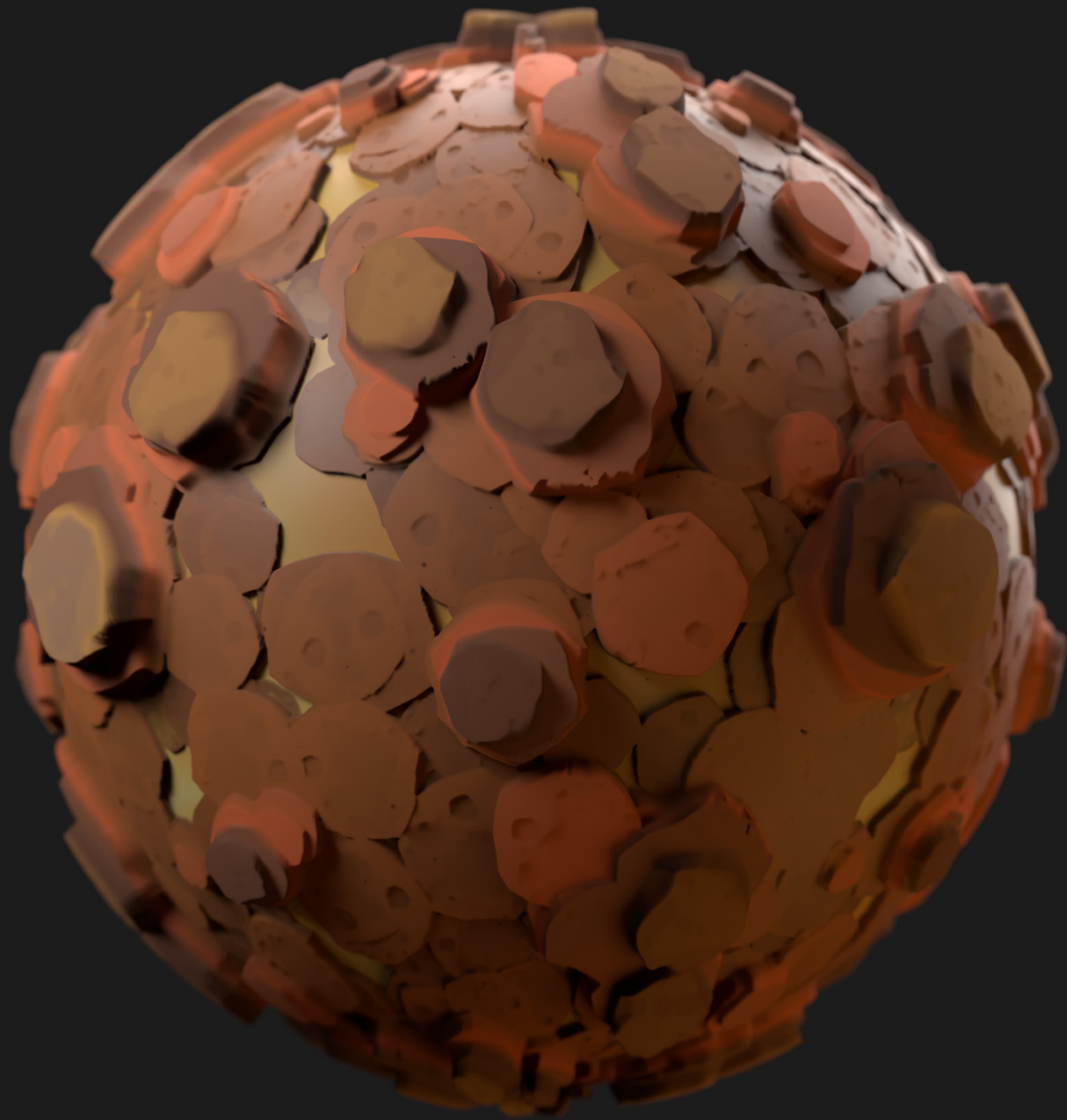
SPACES BETWEEN STONES ARE FILLED WITH SLIPPY WATER



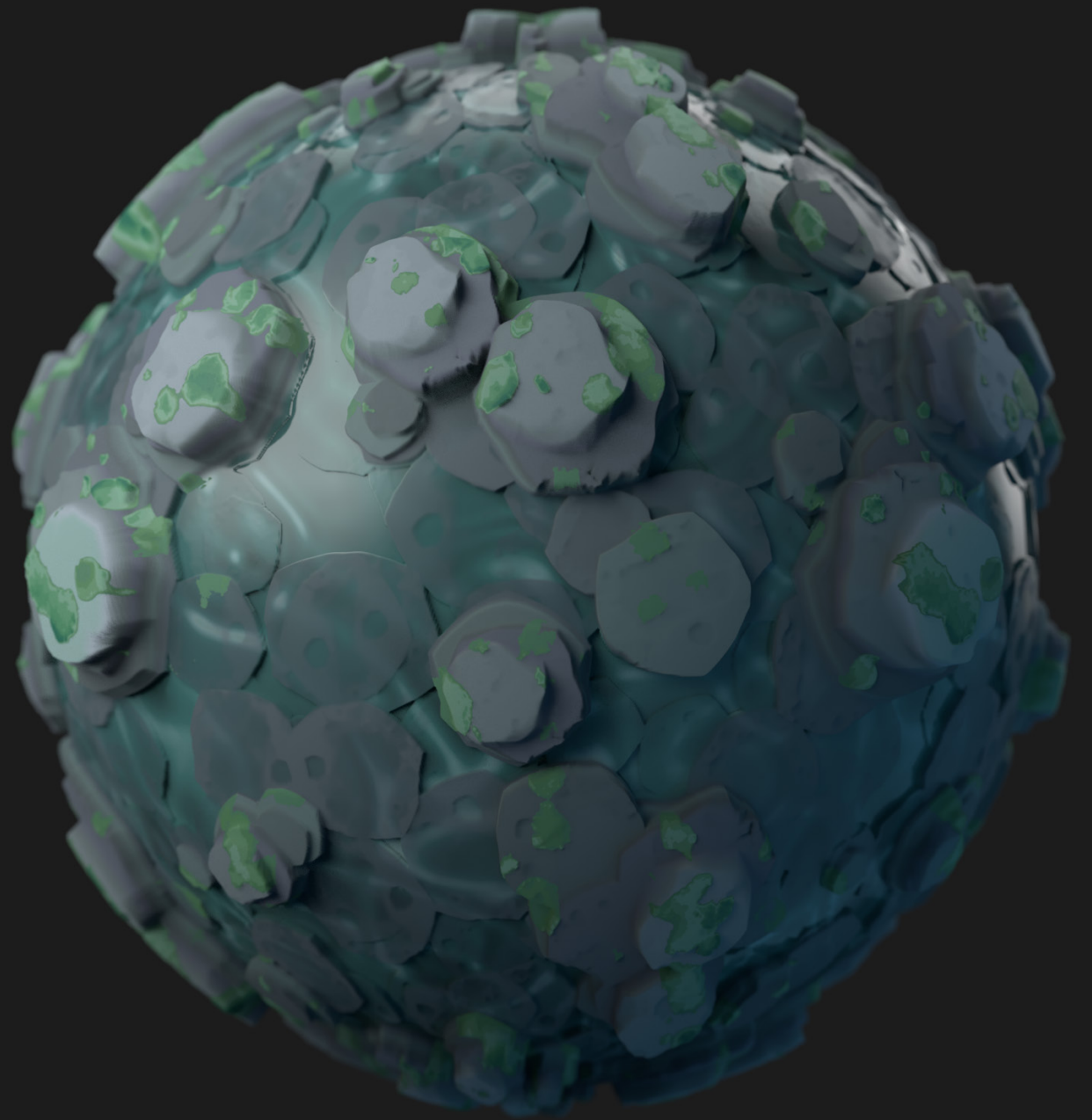
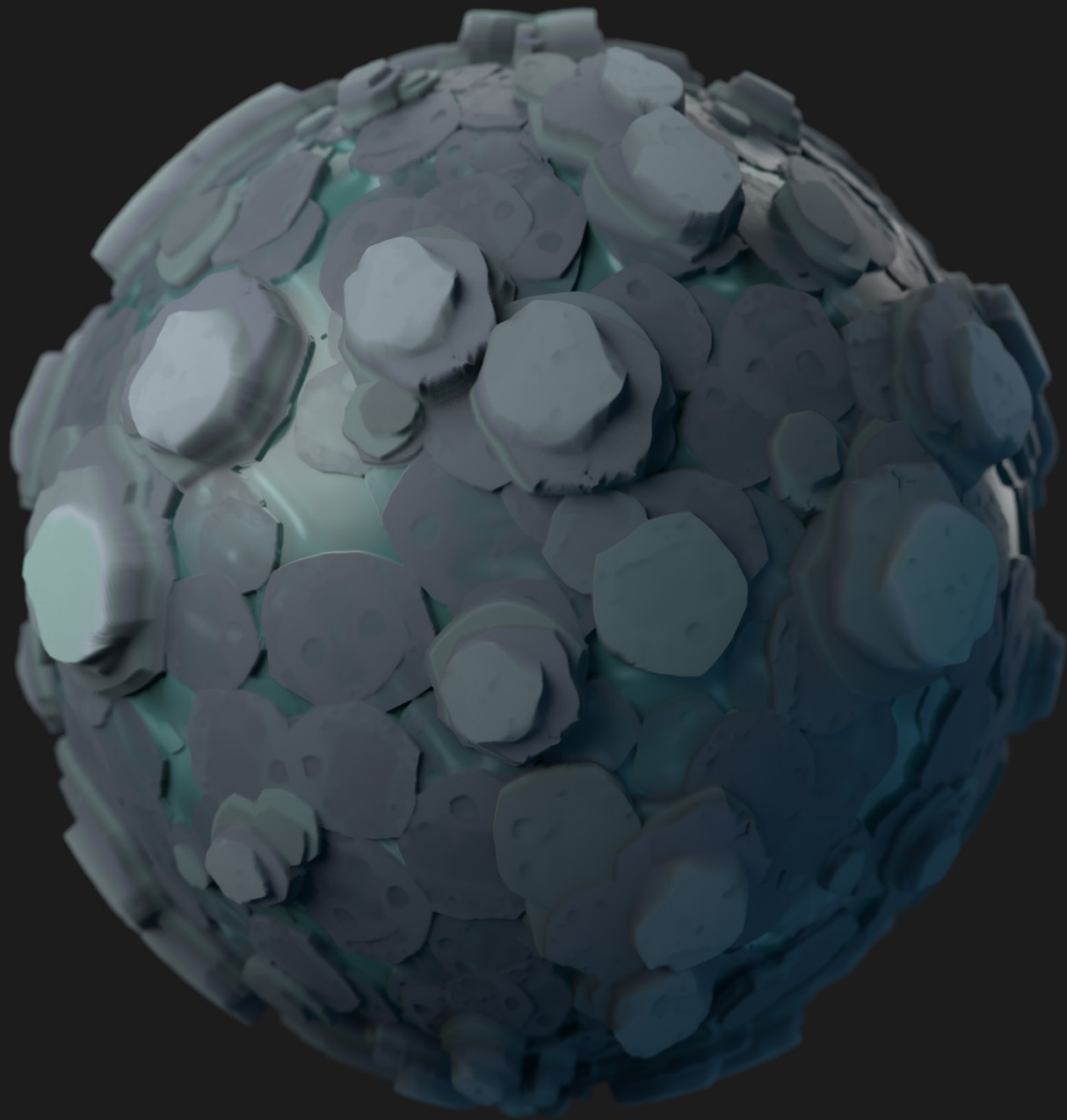


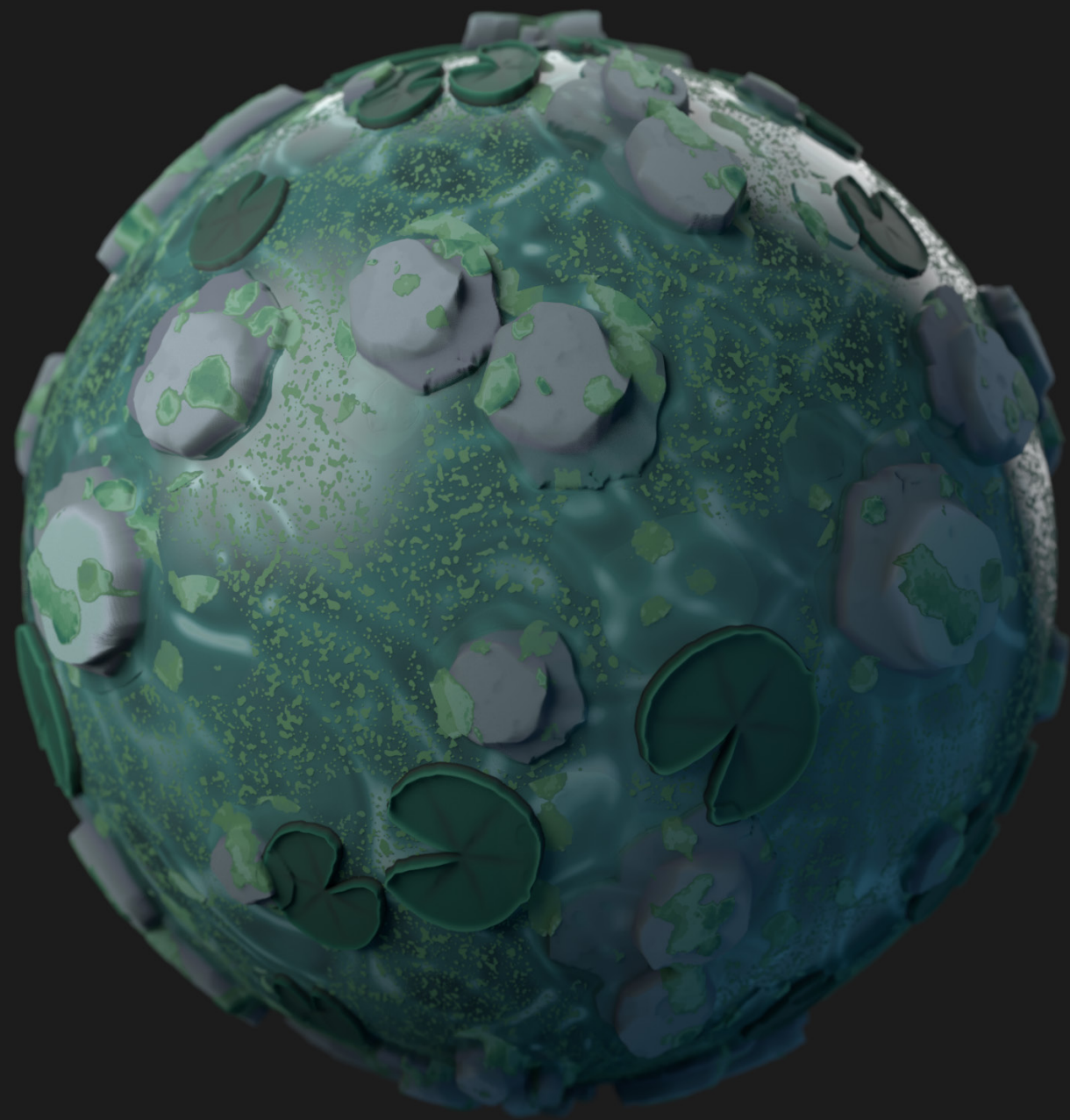
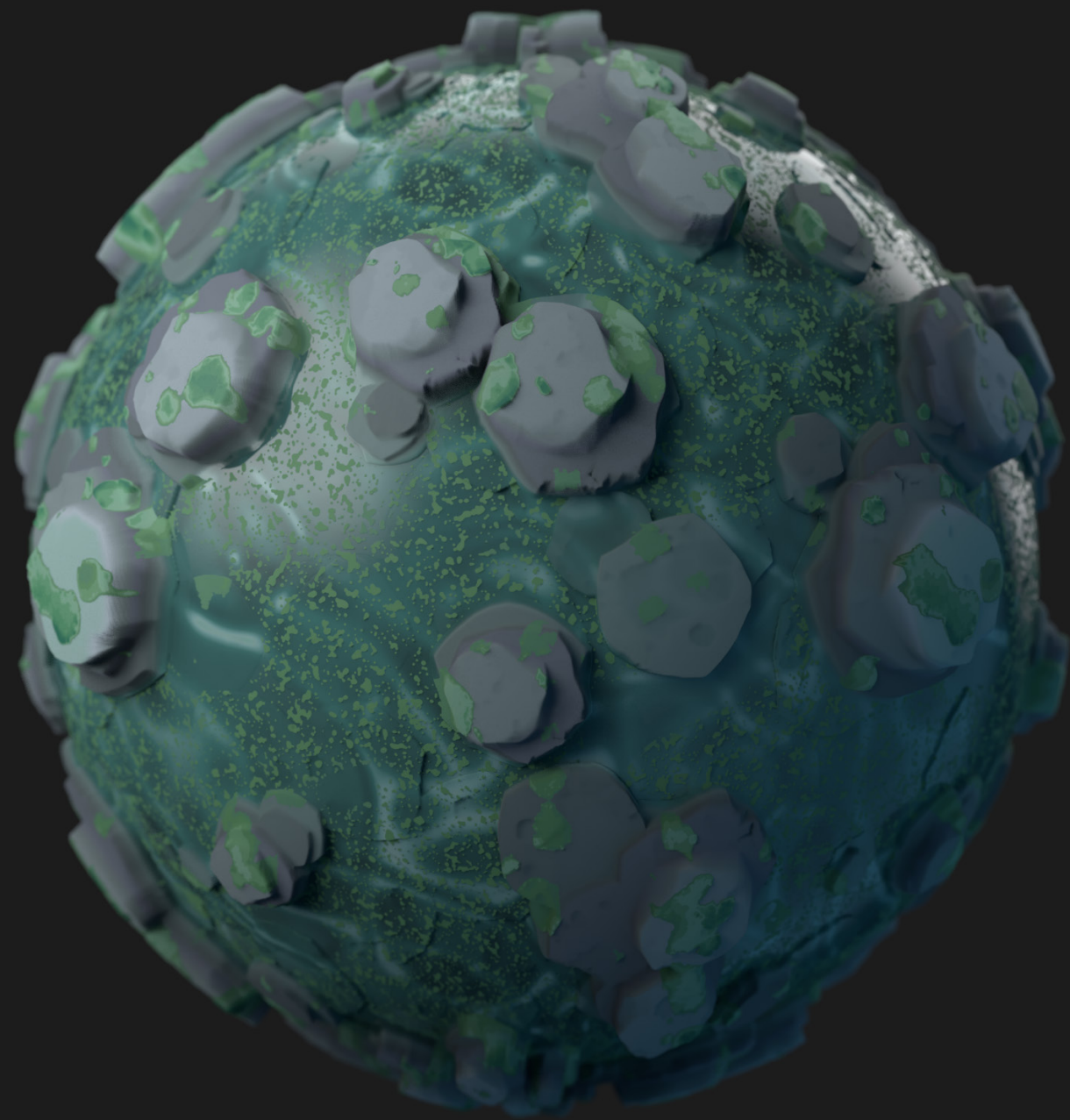




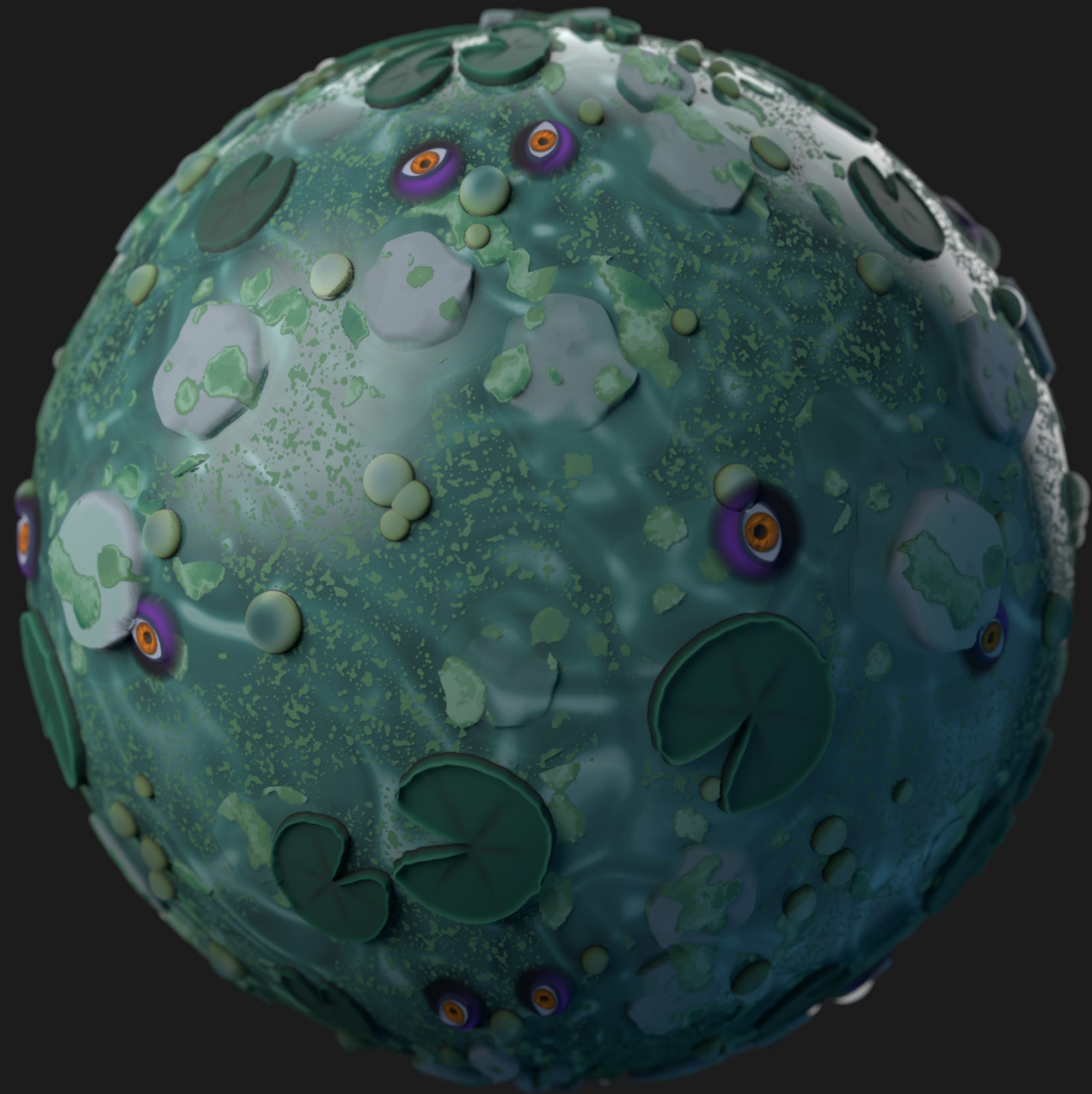
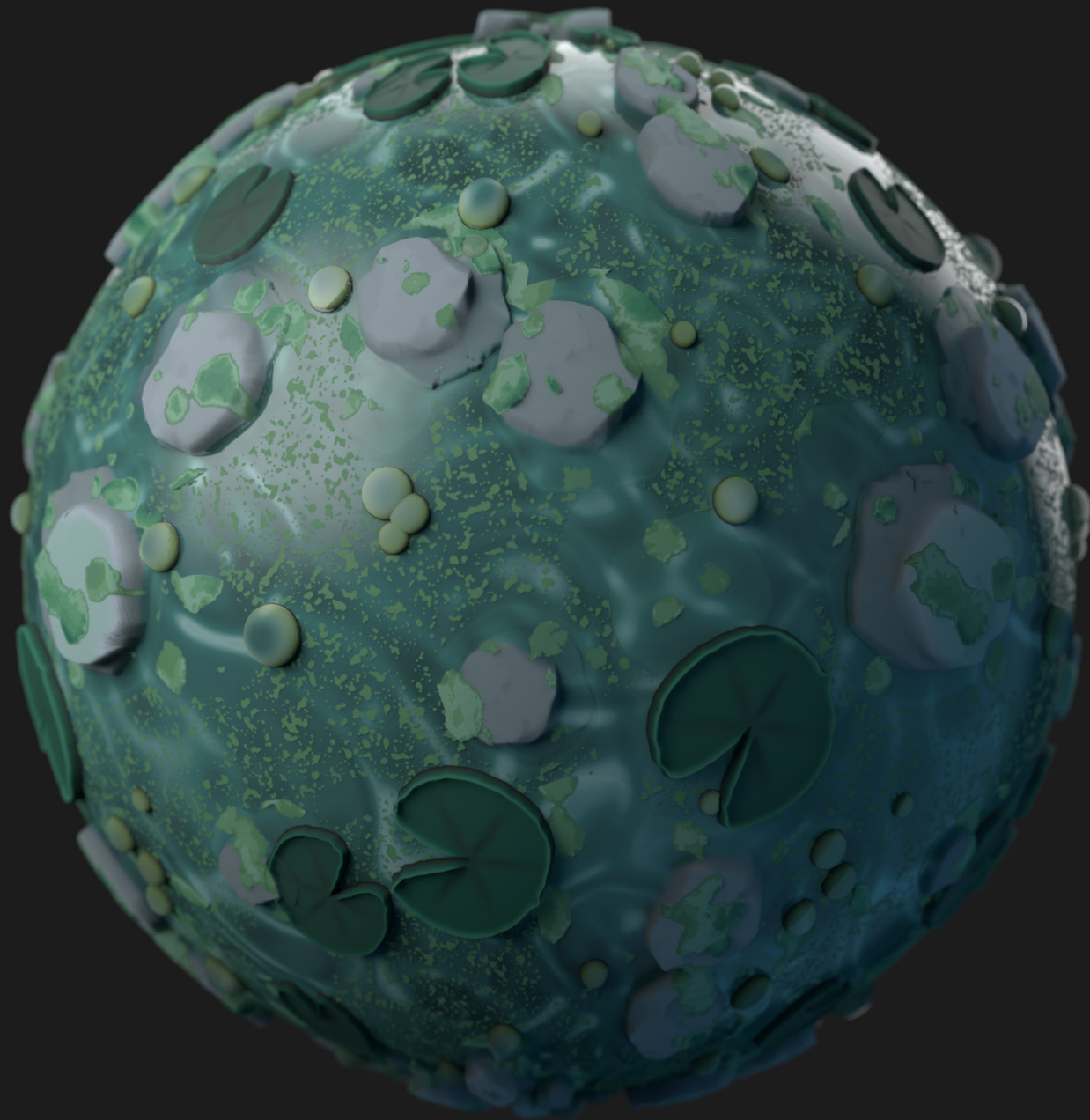










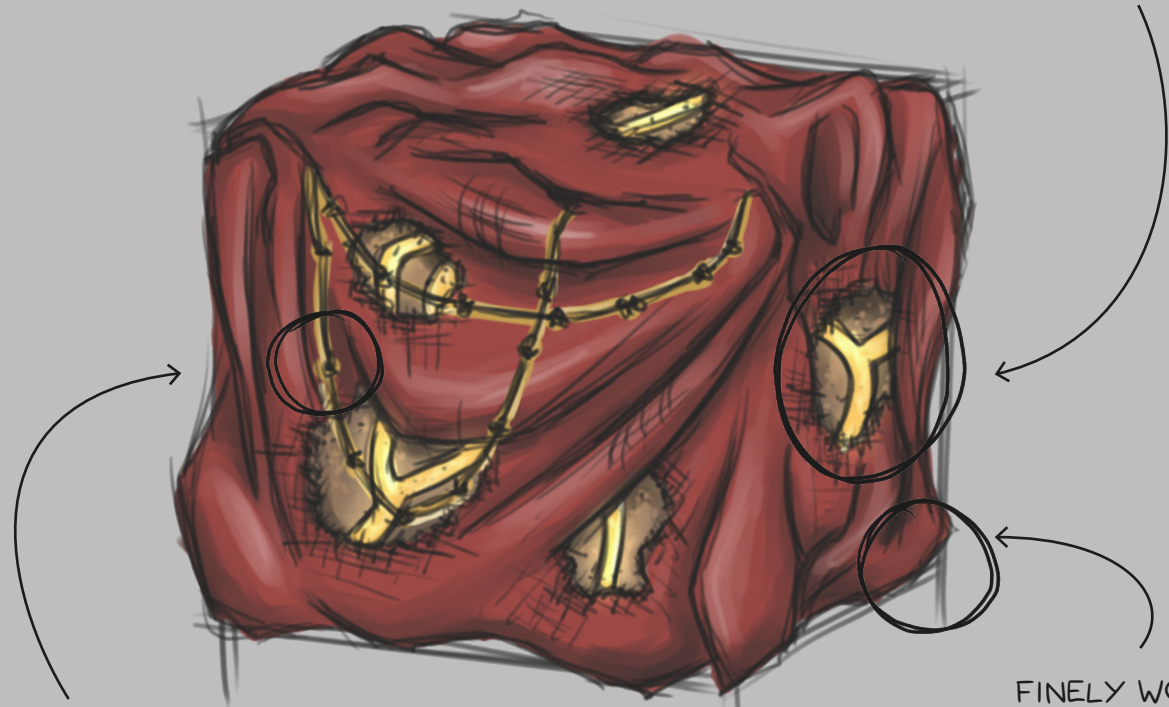




MAGICAL POWERS CAN BE "CHANNELED" WITHIN THE BODY FOR STRENGTHENING

INTERNAL ENERGY

HOLES IN FABRIC THROUGH INCREASED PHYSICAL STRENGTH



GOLD JEWELRY CHAINS AS A SYMBOL OF SPLENDOR

MAGIC POWER IS LOCATED WITHIN THE BODIES OF THE "SUN WORSHIPPERS"

FINELY WOVEN FABRIC EXPRESSES THE CRAFTSMANSHIP OF CULTURE

ENERGY IS VISIBLE AND CHANGEABLE SO IT CAN BE FURTHER PROCESSED

FEW PIGMENTS IN TREE BARK DUE TO LACK OF SUNLIGHT

EXTERNAL ENERGY



MAGIC IS ABSORBED FROM THE WORLD & INFUSED INTO OTHER OBJECTS AND BROUGHT INTO OTHER STATES

BARK CRACKS OPEN & RELEASES ENERGY

DAY



NIGHT



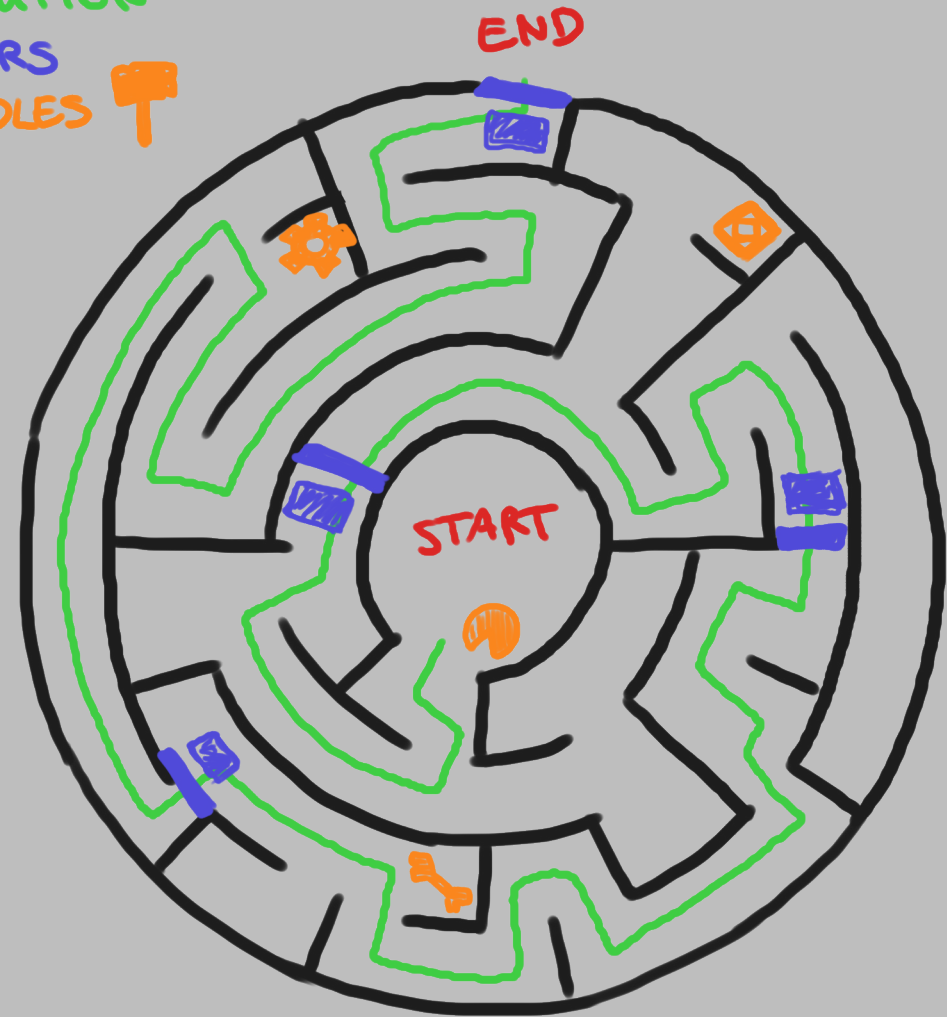


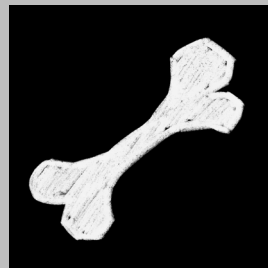
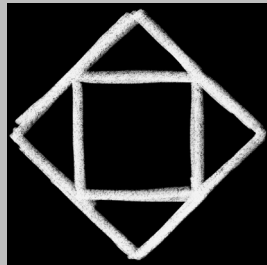
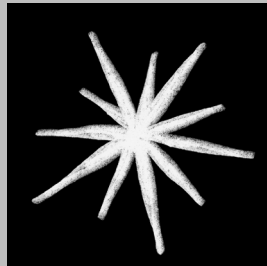
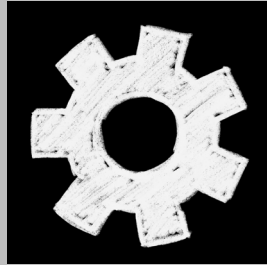
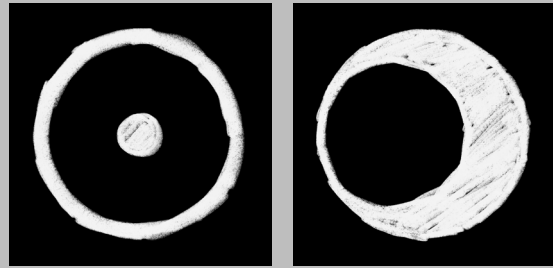
LEVEL

SOLUTION

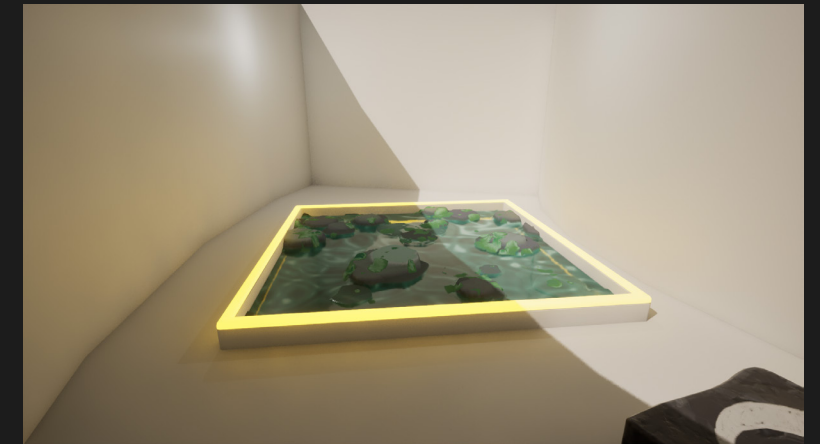
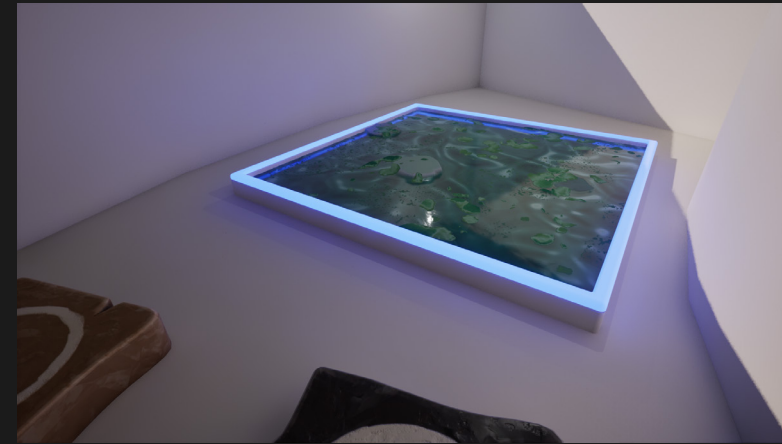
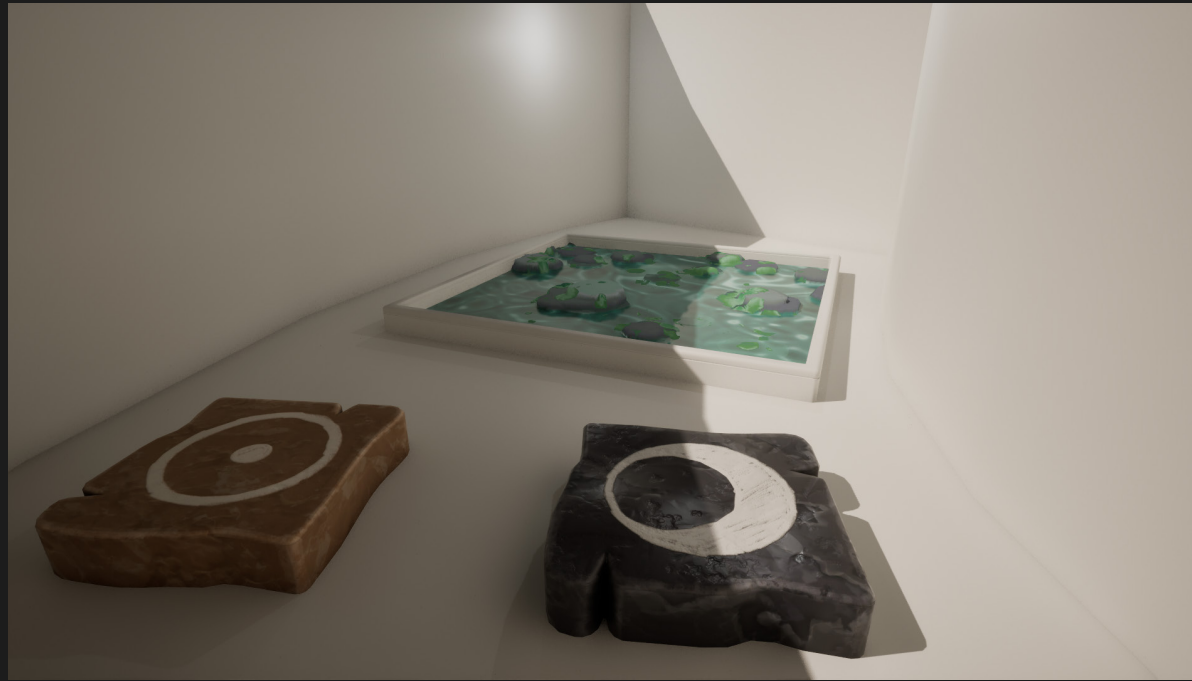
DOORS

RIDDLES









# PROJECT INFO

MASTER PROJECT

MAGIC MATERIALS - KONZEPTION UND UMSETZUNG VON  
PROZEDURALEN UND DYNAMISCHEN MATERIALIEN FÜR GAMES

LAURA KÄPPNER

TECHNICAL UNIVERSITY OF APPLIED SCIENCES AUGSBURG

INTERACTIVE MEDIA SYSTEMS

WINTER SEMESTER 2023/24

SUPERVISION: PROF. JENS MÜLLER



